

# **Evaluation & Preliminary Master Planning Priorities for the Golf Course**

- 1. Course Routing**
- 2. Lakes & Lake Connections**
- 3. Drainage**
- 4. Cart Paths**
- 5. Irrigation System**
- 6. Other Course Features**
- 7. Driving Range**
- 8. Par 3 Course & Entrance**

# **Other Golf Course Features**

- 1. Greens**
- 2. Collars**
- 3. Tees**
- 4. Fairways**
- 5. Rough**
- 6. Bunkers**
- 7. Cart Paths**
- 8. Bridges**
- 9. Trees & Landscaping**

# EXISTING COURSE TOPOGRAPHY



Notas Generales



No.	Revisión/Cuestión	Fecha

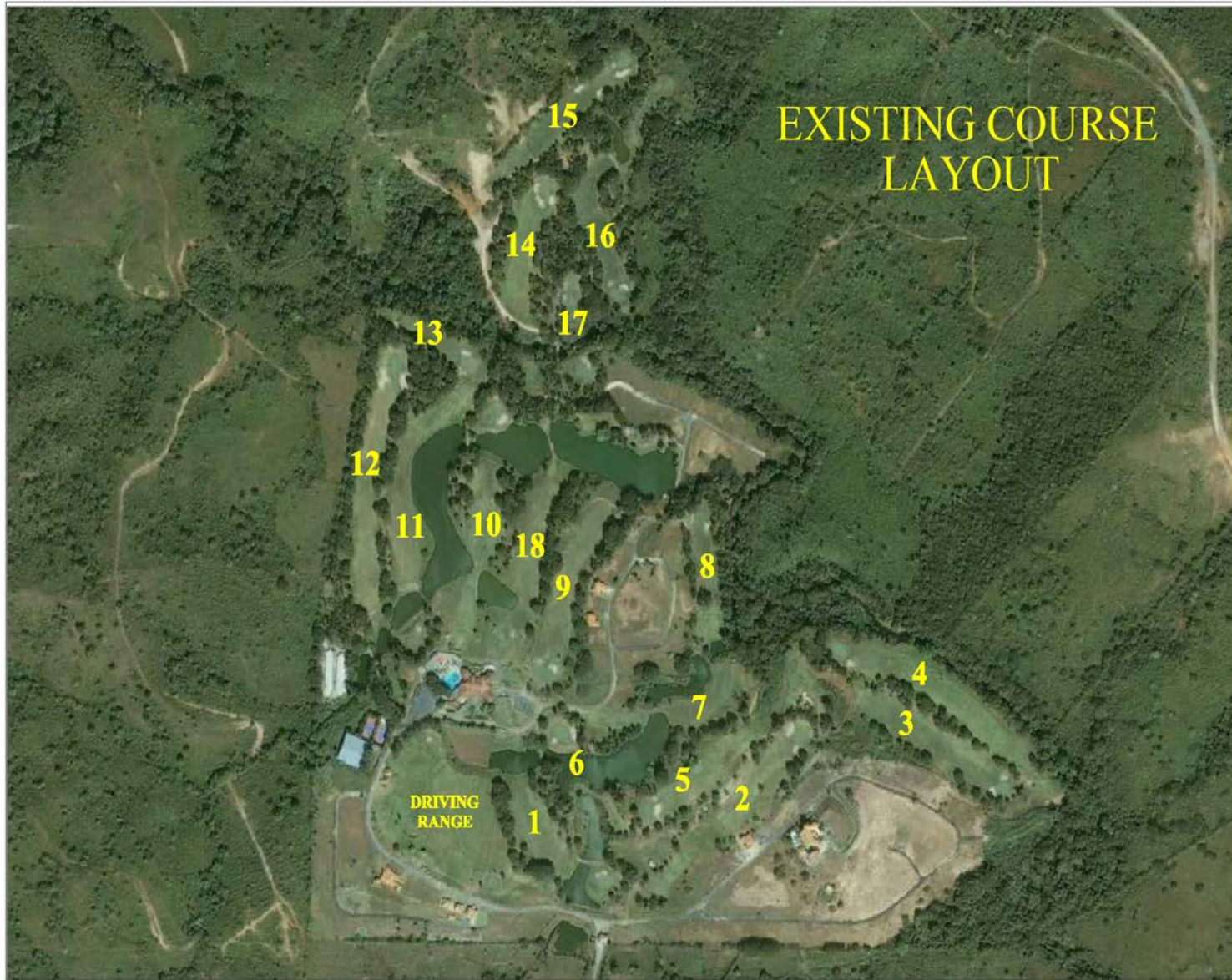
Empresa Nombre y Dirección:  
**MASTER PLAN DE RENOVACIÓN FASE I MASTER PLAN PRELIMINAR**

**EPYPSA**  
 EPYPSA INGENIERÍA S.A.  
 EPYPSA CORP.  
 225 West 42nd St.  
 New York City, NY 10036  
 +1 212 368-6100 www.epypsa.com

**Raymond Hearn**  
 Golf Course Planners, Inc.  
 417 East Avenue Street  
 Huntington Beach, CA 92648  
 +1 714 366-1100 www.rhplanners.com

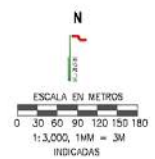
Proyecto Nombre y Dirección:  
**CLUB DE GOLF DE PANAMA**

Título	
Fecha	Nº de Plano
13/12/2012	G-E
Escala INDICADAS	



# EXISTING COURSE LAYOUT

Notas Generales



No.	Revisión/ Cuota/50n	Fecha

Empresa Autora y Diseñadora

**MASTER PLAN DE RENOVACIÓN**  
FASE I MASTER PLAN PRELIMINAR

**EPYPSA**  
CORPORACION PANAMAZA  
US EPPYSA CORP  
Incorporada en USA  
100 Boulevard  
Suite 200  
New York City, NY 10022  
+1 646 238 4362 www.epypsa.com

**Raymond Hearn**  
Golf Course Designer, Inc.  
877 Highland Court  
Westport, Michigan USA 48150  
48150-1000  
481 586 1800 Fax  
rhg@rhearngolf.com

Propiedad, Tenencia y Dirección:

**CLUB DE GOLF DE PANAMA**

Título	
Fecha	Nº de Plano
13/12/2012	G-A
Estado INDICADAS	

NEW HOLES 14 AND 15

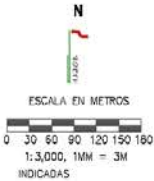
EXCESSIVE SPOILS FROM EXCAVATION TO BE USED IN NEW REAL ESTATE DEVELOPMENT OR IN THE DRIVING RANGE.

# MASTER PLAN

## SCORECARD

NEW HOLE #	OLD HOLE #	AZUL	BLANCO	AMARILLO	ROJO	PAR
1	1	400	389	357	334	4
2	2	426	378	347	303	4
3	5	408	372	361	324	4
4	6	213	194	160	107	3
5	7	398	336	300	280	4
6	8	147	136	126	110	3
7	9	476	461	450	439	5
8	10	434	369	337	307	4
9	11	498	421	397	366	5
OUT		3400	3046	2835	2570	36
10	12	610	566	544	422	5
11	13	180	157	145	135	3
12	14	421	410	370	268	4
13	15	422	350	322	288	4
14	New	535	515	499	421	5
15	New	455	427	410	324	4
16	16	421	389	361	250	4
17	17	165	142	120	112	3
18	18	458	414	395	315	4
IN		3667	3370	3166	2538	36
OUT		3400	3046	2835	2570	36
TOTAL		7067	6416	6001	5108	72

Notas Generales



No. Revisión/Cuestión Fecha

Empresa Nombre y Dirección

**MASTER PLAN DE RENOVACIÓN**  
FASE I MASTER PLAN PRELIMINAR



Proyecto Nombre y Dirección

**CLUB DE GOLF DE PANAMA**



Título

Fecha 13/12/2012

Estado INDICADAS

Nº de Plano

**G-MP**

INCREASE ELEVATION THEN SELL AS REAL ESTATE.

# New Master Plan Scorecard

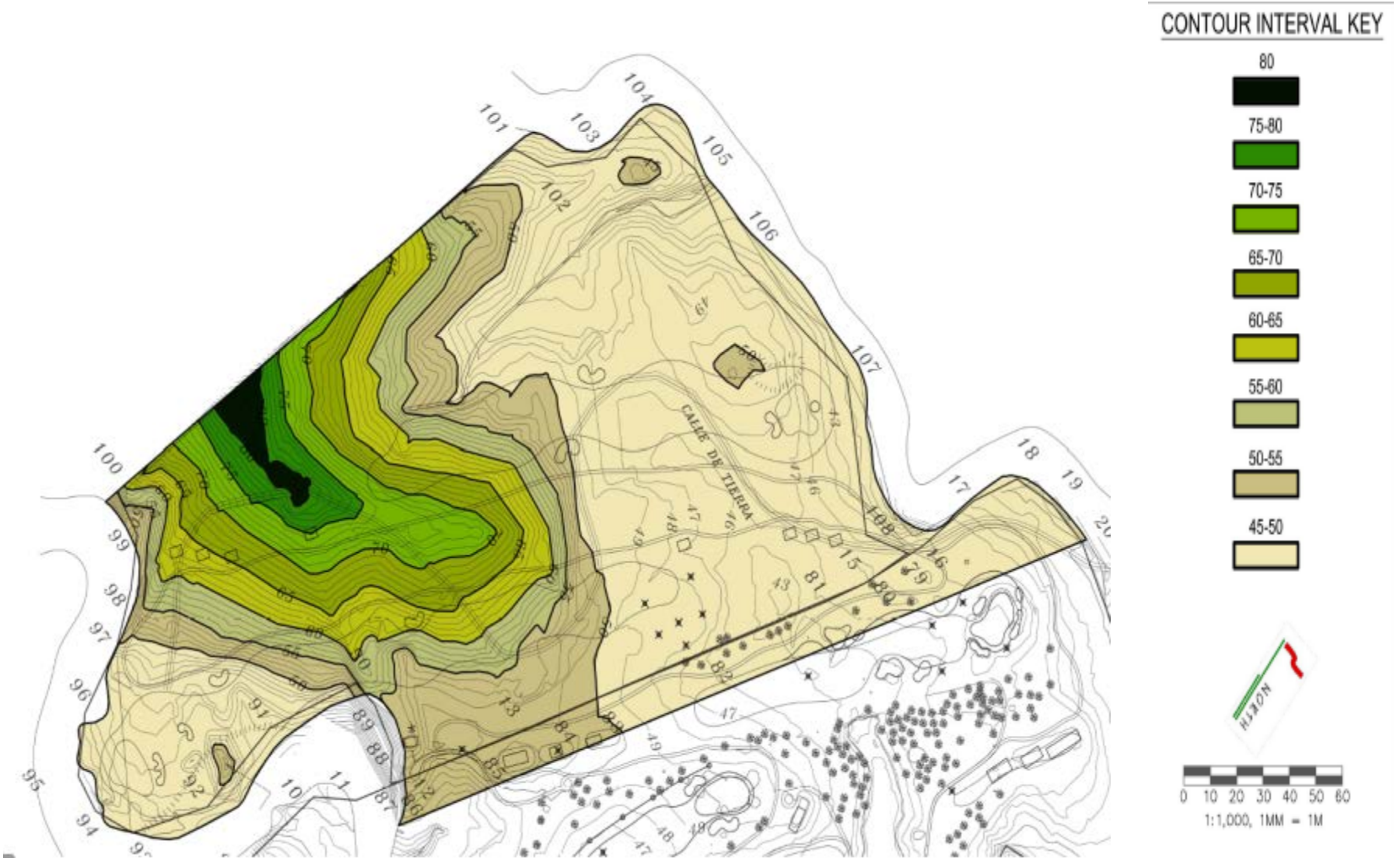
NEW HOLE #	OLD HOLE #	AZUL	BLANCO	AMARILLO	ROJO	PAR
1	1	400	389	357	334	4
2	2	426	378	347	303	4
3	5	408	372	361	324	4
4	6	213	184	160	107	3
5	7	398	336	300	280	4
6	8	147	136	126	110	3
7	9	476	461	450	439	5
8	10	434	369	337	307	4
9	<u>11</u>	<u>498</u>	<u>421</u>	<u>397</u>	<u>366</u>	<u>5</u>
OUT		3400	3046	2835	2570	36
10	12	610	566	544	422	5
11	13	180	157	145	135	3
12	14	421	410	370	268	4
13	15	422	350	322	288	4
14	New	535	515	499	424	5
15	New	455	427	410	324	4
16	16	421	389	361	250	4
17	17	165	142	120	112	3
18	18	<u>458</u>	<u>414</u>	<u>395</u>	<u>315</u>	<u>4</u>
IN		3667	3370	3166	2538	36
OUT		<u>3400</u>	<u>3046</u>	<u>2835</u>	<u>2570</u>	<u>36</u>
TOTAL		7067	6416	6001	5108	72

The Azul Tee on Hole #7 (Old #9) can be expanded to 511 Yards is two lots are purchased.

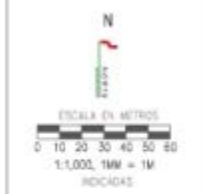
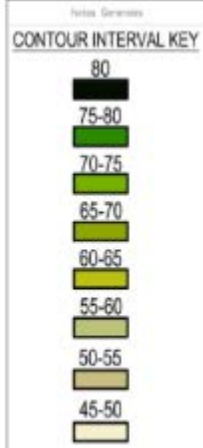
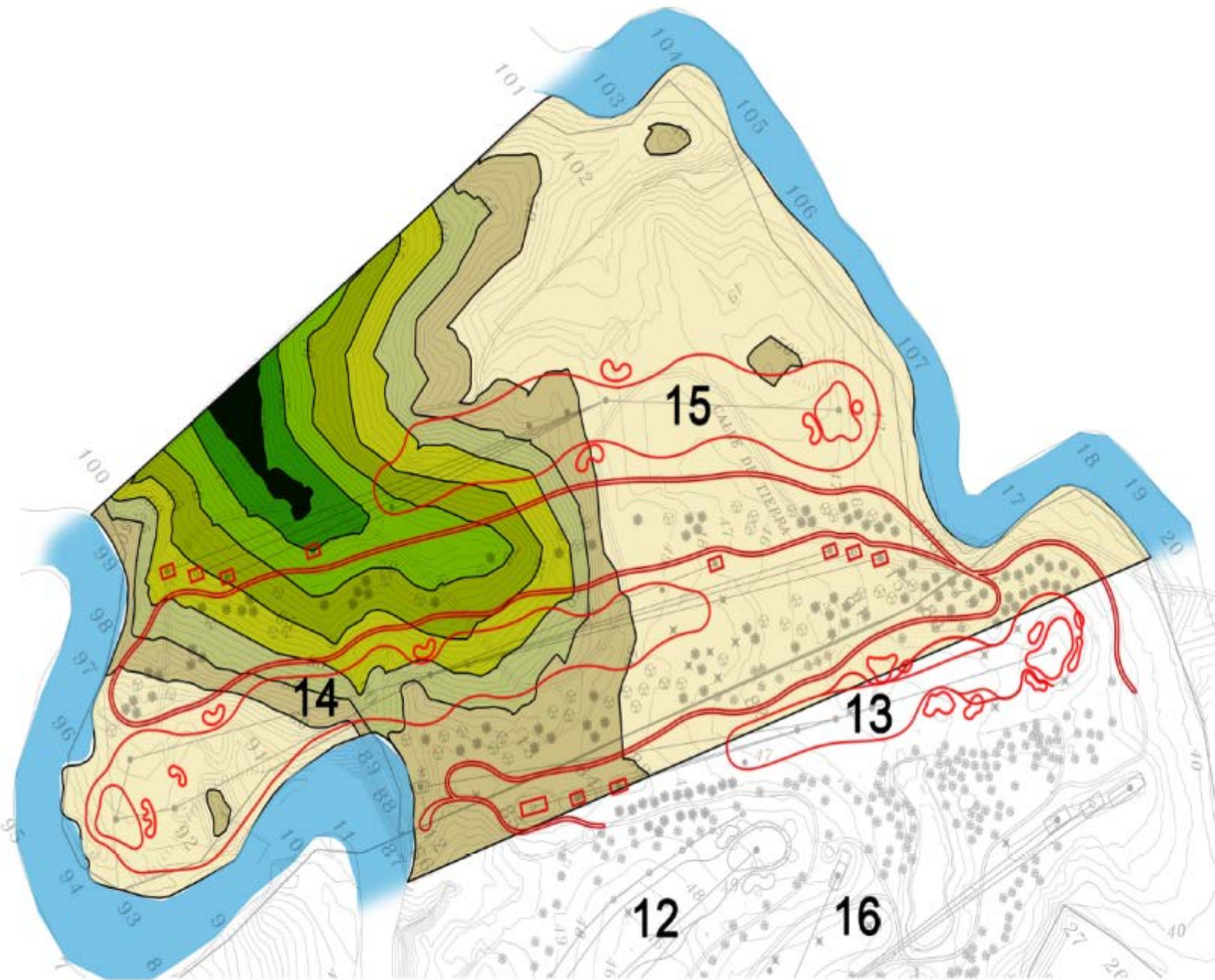
# Existing Scorecard to New Master Plan Scorecard Comparison

Scorecard Comparison	Azul	Blanco	Amarillo	Rojo	Par
Existing Scorecard	7065	6365	5991	5122	72
New Master Plan Scorecard	7067	6416	6001	5108	72
Difference	2	51	10	-14	0

# Topography of the New Land







No.	Revisión/Comentarios	Fecha

Diseño: Antonio J. Sánchez

**MASTER PLAN DE RENOVACIÓN**  
FASE I MASTER PLAN PRELIMINAR

**EPYPSA**  
INGENIEROS, ARQUITECTOS Y DISEÑADORES  
SUS EPYPSA CORP.  
1911 Westwood Blvd., Suite 100  
Westwood, California 90024  
415.350.5452 www.epypsa.com

**Raymond Hearn**  
Golf Course Planning, Inc.  
301 Highmaster Court  
Pittsford, New York 14226  
518.437.1000 www.rhgcpl.com

Reservado: Antonio J. Sánchez

**CLUB DE GOLF DE PANAMA**

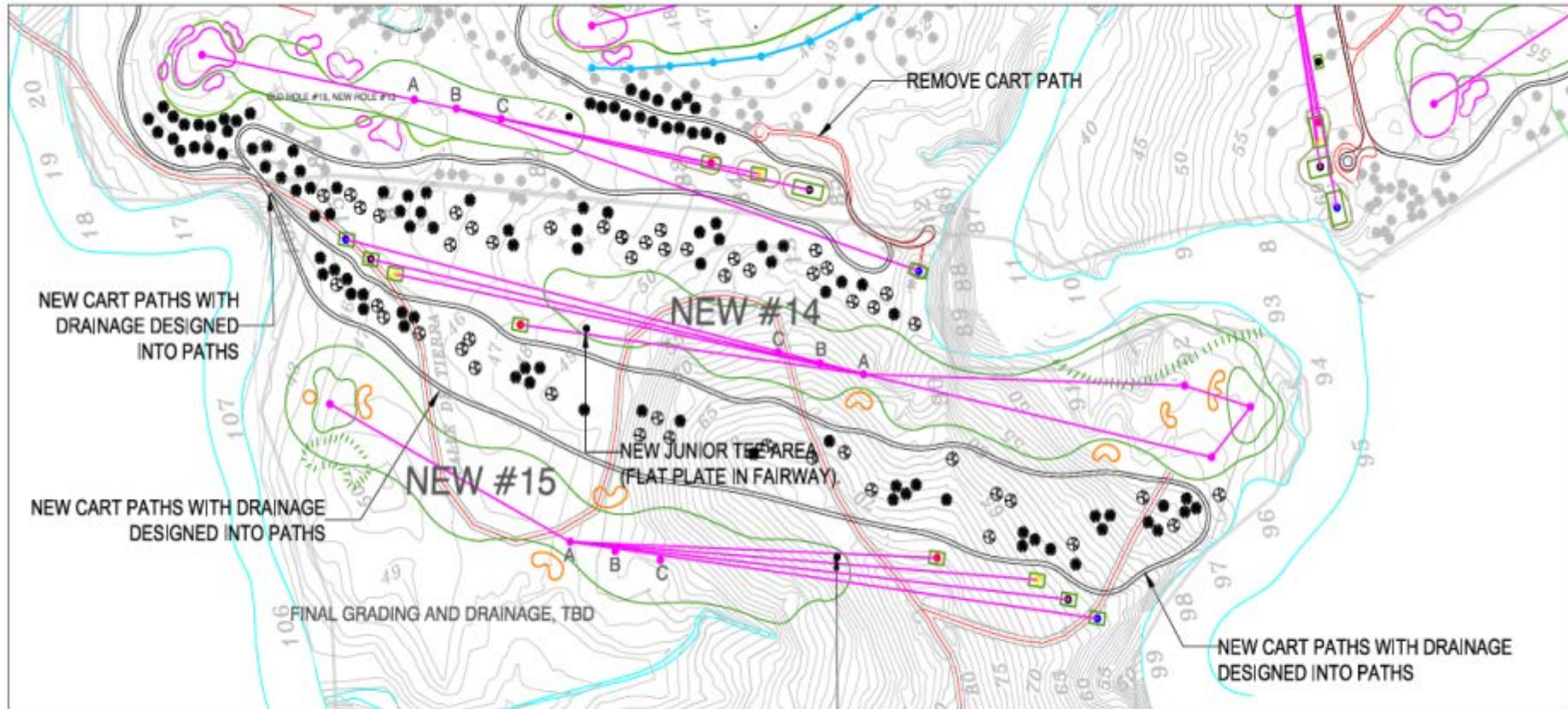
Club de Golf de Panamá  
Panamá, D.C.

Fecha:

No. de Proyecto:	13/12/2012
Nombre del Proyecto:	G-NL

INDICADAS

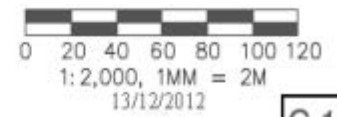
# PRELIMINARY MASTER PLAN NEW HOLES #14 AND #15



**SCORECARD**

	Azul	Blanco	Amarillo	Rojo	Junior Tee	PAR
HOLE #14:	535	515	499	424	360	5
HOLE #15:	455	427	410	324	295	4

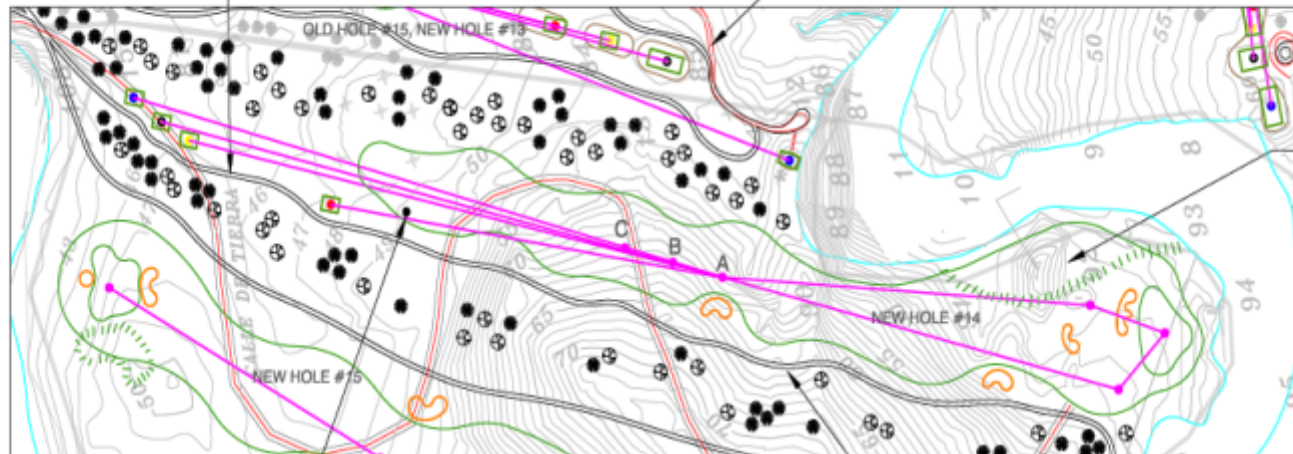
- RED LINES = CART PATH TO BE REMOVED.
- \*MAINTAIN 15CM OF APPROVED SAND IN ALL BUNKERS.
- \*ALL LAKE, BANK STABILIZATION, OVERFLOWS, MAINLINE DRAINAGE AND BRIDGE DESIGN BY EPYPSA
- \* TBD = TO BE DETERMINED



# PRELIMINARY MASTER PLAN NEW HOLE #14

NEW CART PATHS WITH DRAINAGE  
DESIGNED INTO PATHS

REMOVE CART PATH



LOWER PLATEAU

NEW JUNIOR TEE AREA  
(FLAT PLATE IN FAIRWAY)

FINAL GRADING AND DRAINAGE, TBD

NEW CART PATHS WITH DRAINAGE  
DESIGNED INTO PATHS

## SCORECARD

	Azul	Blanco	Amarillo	Rojo	PAR
PROPOSED:	535	515	499	424	5

● JUNIOR TEE PLATE = 360 YARDS PAR 5

## SHOT MATRIX

	Azul	Blanco	Amarillo	Rojo	D
A:	300	280	264	189	195
B:	275	255	239	164	220
C:	250	230	214	139	245

— RED LINES = CART PATH  
— TO BE REMOVED.

\*MAINTAIN 15CM OF APPROVED  
SAND IN ALL BUNKERS.

\*ALL LAKE, BANK STABILIZATION,  
OVERFLOWS, MAINLINE DRAINAGE AND  
BRIDGE DESIGN BY EPYPSA

♦ TBD = TO BE DETERMINED



1:2,000, 1MM = 2M

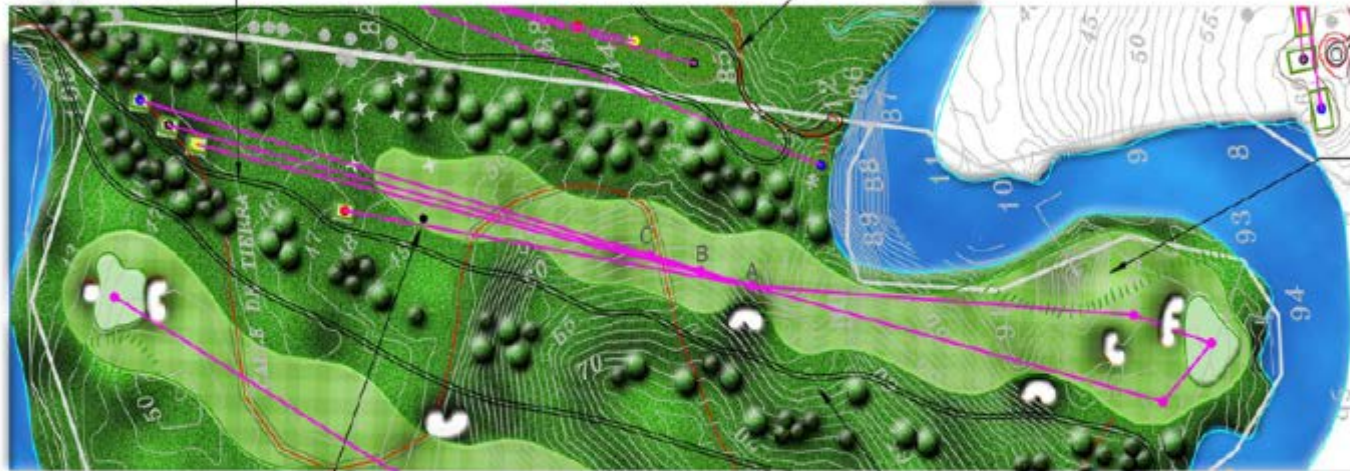
13/12/2012

G-14A

# PRELIMINARY MASTER PLAN NEW HOLE #14

NEW CART PATHS WITH DRAINAGE  
DESIGNED INTO PATHS

REMOVE CART PATH



LOWER PLATEAU

NEW JUNIOR TEE AREA  
(FLAT PLATE IN FAIRWAY).

FINAL GRADING AND DRAINAGE, TBD

NEW CART PATHS WITH DRAINAGE  
DESIGNED INTO PATHS

## SCORECARD

	Azul	Blanco	Amarillo	Rojo	PAR
PROPOSED:	535	515	499	424	5

● JUNIOR TEE PLATE = 360 YARDS PAR 5

## SHOT MATRIX

	Azul	Blanco	Amarillo	Rojo	D
A:	300	280	264	189	195
B:	275	255	239	164	220
C:	250	230	214	139	245

— RED LINES = CART PATH  
TO BE REMOVED.

\*MAINTAIN 15CM OF APPROVED  
SAND IN ALL BUNKERS.

\*ALL LAKE, BANK STABILIZATION,  
OVERFLOWS, MAINLINE DRAINAGE AND  
BRIDGE DESIGN BY EPYPSA

\* TBD = TO BE DETERMINED

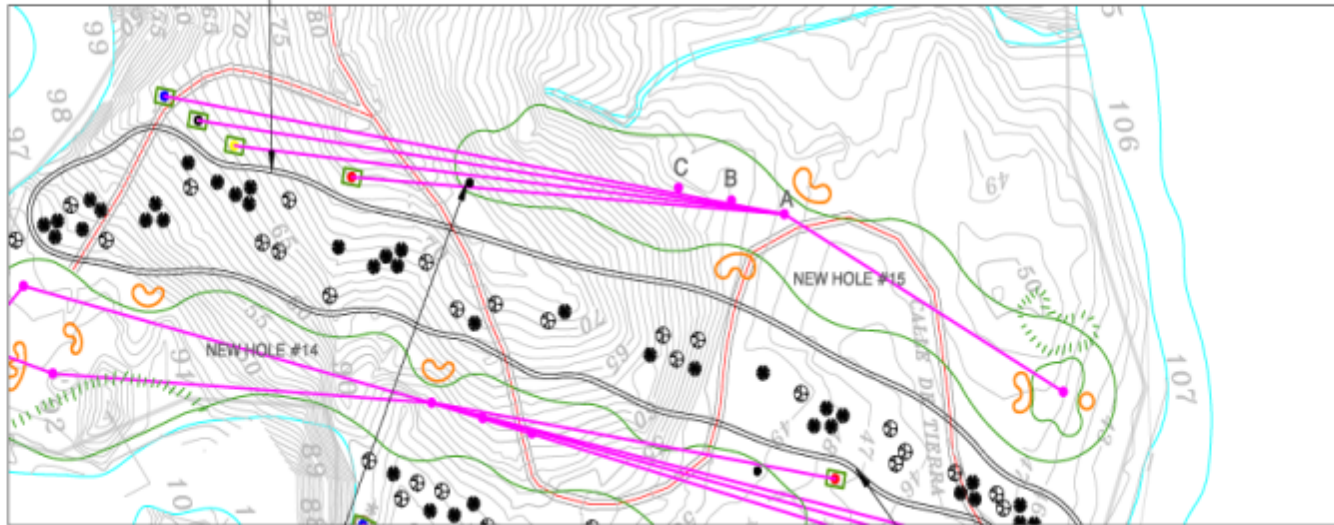


1:2,000, 1MM = 2M

13/12/2012

# PRELIMINARY MASTER PLAN NEW HOLE #15

NEW CART PATHS WITH DRAINAGE  
DESIGNED INTO PATHS



NEW JUNIOR TEE AREA  
(FLAT PLATE IN FAIRWAY),

FINAL GRADING AND DRAINAGE, TBD

NEW CART PATHS WITH DRAINAGE  
DESIGNED INTO PATHS

- RED LINES = CART PATH TO BE REMOVED.
- \*MAINTAIN 15CM OF APPROVED SAND IN ALL BUNKERS.
- \*ALL LAKE, BANK STABILIZATION, OVERFLOWS, MAINLINE DRAINAGE AND BRIDGE DESIGN BY EPYPSA
- \* TBD = TO BE DETERMINED

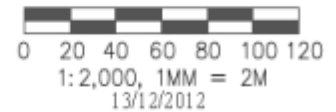
### SCORECARD

	Azul	Blanco	Amarillo	Rojo	PAR
PROPOSED:	455	427	410	324	4

● JUNIOR TEE PLATE = 295 YARDS PAR 4

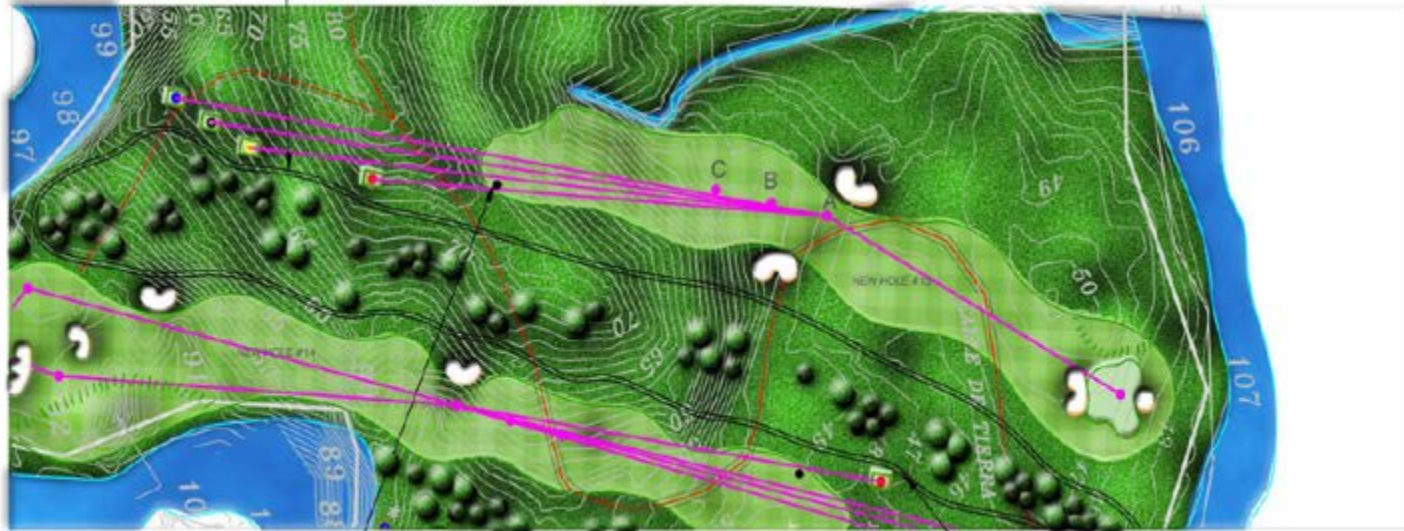
### SHOT MATRIX

	Azul	Blanco	Amarillo	Rojo
A:	300	275	258	172
B:	275	247	230	144
C:	250	222	205	119



# PRELIMINARY MASTER PLAN NEW HOLE #15

NEW CART PATHS WITH DRAINAGE  
DESIGNED INTO PATHS



NEW JUNIOR TEE AREA  
(FLAT PLATE IN FAIRWAY).

NEW CART PATHS WITH DRAINAGE  
DESIGNED INTO PATHS

- RED LINES = CART PATH TO BE REMOVED.
- \*MAINTAIN 15CM OF APPROVED SAND IN ALL BUNKERS.
- \*ALL LAKE, BANK STABILIZATION, OVERFLOWS, MAINLINE DRAINAGE AND BRIDGE DESIGN BY EPYPSA
- \* TBD = TO BE DETERMINED

## SCORECARD

	Azul	Blanco	Amarillo	Rojo	PAR
PROPOSED:	455	427	410	324	4

● JUNIOR TEE PLATE = 295 YARDS PAR 4

## SHOT MATRIX

	Azul	Blanco	Amarillo	Rojo
A:	300	275	258	172
B:	275	247	230	144
C:	250	222	205	119



PRELIMINARY  
**MASTER PLAN**  
 3D PERSPECTIVE OF NEW HOLES #14 AND #15



OLD HOLE #15, NEW HOLE #13

PROPOSED NEW HOLE #14

PROPOSED NEW HOLE #15

Hoja: General



No.	Revisión/Descripción	Fecha

Empresa: **EPYPSA**  
**MASTER PLAN DE RENOVACIÓN**  
 FASE I MASTER PLAN PRELIMINAR



JOSÉ VICENTE  
 INGENIERO EN CIVIL  
 No. 14.001.000  
 C.R. 14.001.000

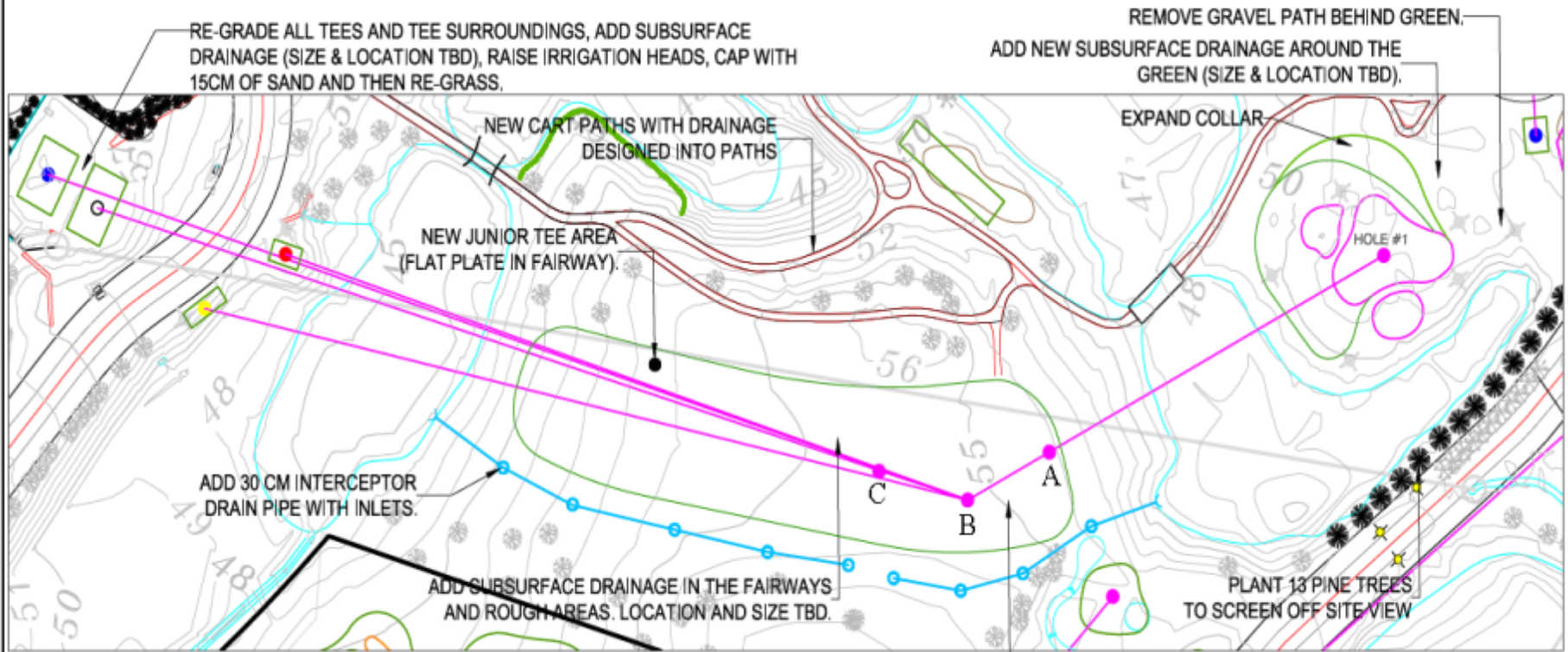
**Raymond Hearn**  
 Golf Course Design, Inc.  
 375 Highland Court  
 Holland, Michigan USA 49424  
 616 281 1000 www.rhdesign.com  
 616 281 1000 rhdesign.com

Proyecto: **CLUB DE GOLF DE PANAMA**



Fecha: 13/12/2012		IV de Plan: G-15C
Escala: INDICADAS		

# PRELIMINARY MASTER PLAN HOLE #1



**SCORECARD**

	Azul	Blanco	Amarillo	Rojo	PAR
EXISTING:	400	389	357	334	4
PROPOSED:	400	389	357	334	4

● JUNIOR TEE PLATE = 230 YARDS PAR 4

**SHOT MATRIX**

	Azul	Blanco	Amarillo	Rojo
A:	300	289	257	234
B:	275	264	232	209
C:	250	239	207	184

- RED LINES = CART PATH TO BE REMOVED.
- \*MAINTAIN 15CM OF APPROVED SAND IN ALL BUNKERS.
- \*ALL LAKE, BANK STABILIZATION, OVERFLOWS, MAINLINE DRAINAGE AND BRIDGE DESIGN BY EPYPSA
- \* TBD = TO BE DETERMINED



1:1,000, 1MM = 1M

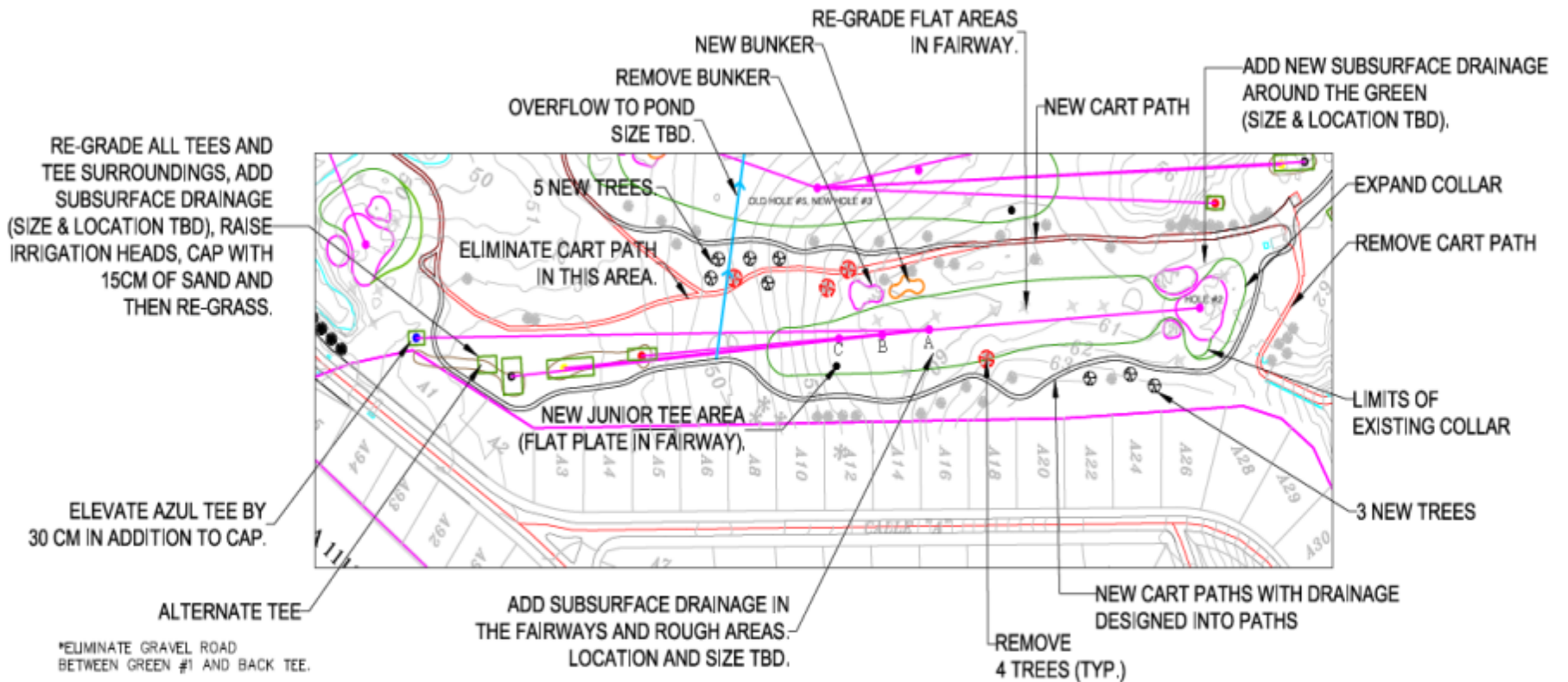
13/12/2012



Heavy Seasonal Rainfall + Flat Areas + Clay Soils  
+ Little Subsurface Drainage = Wet Fairways



# PRELIMINARY MASTER PLAN HOLE #2



SCORECARD					
	Azul	Blanco	Amarillo	Rojo	PAR
EXISTING:	426	378	347	303	4
PROPOSED:	426	378	347	303	4

● JUNIOR TEE PLATE = 197 YARDS PAR 4

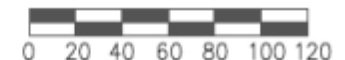
SHOT MATRIX				
	Azul	Blanco	Amarillo	Rojo
A:	300	252	221	177
B:	275	227	196	152
C:	250	202	171	127

— RED LINES = CART PATH TO BE REMOVED.

\*MAINTAIN 15CM OF APPROVED SAND IN ALL BUNKERS.

\*ALL LAKE, BANK STABILIZATION, OVERFLOWS, MAINLINE DRAINAGE AND BRIDGE DESIGN BY EPYPSA

• TBD = TO BE DETERMINED



1:2,000, 1MM = 2M

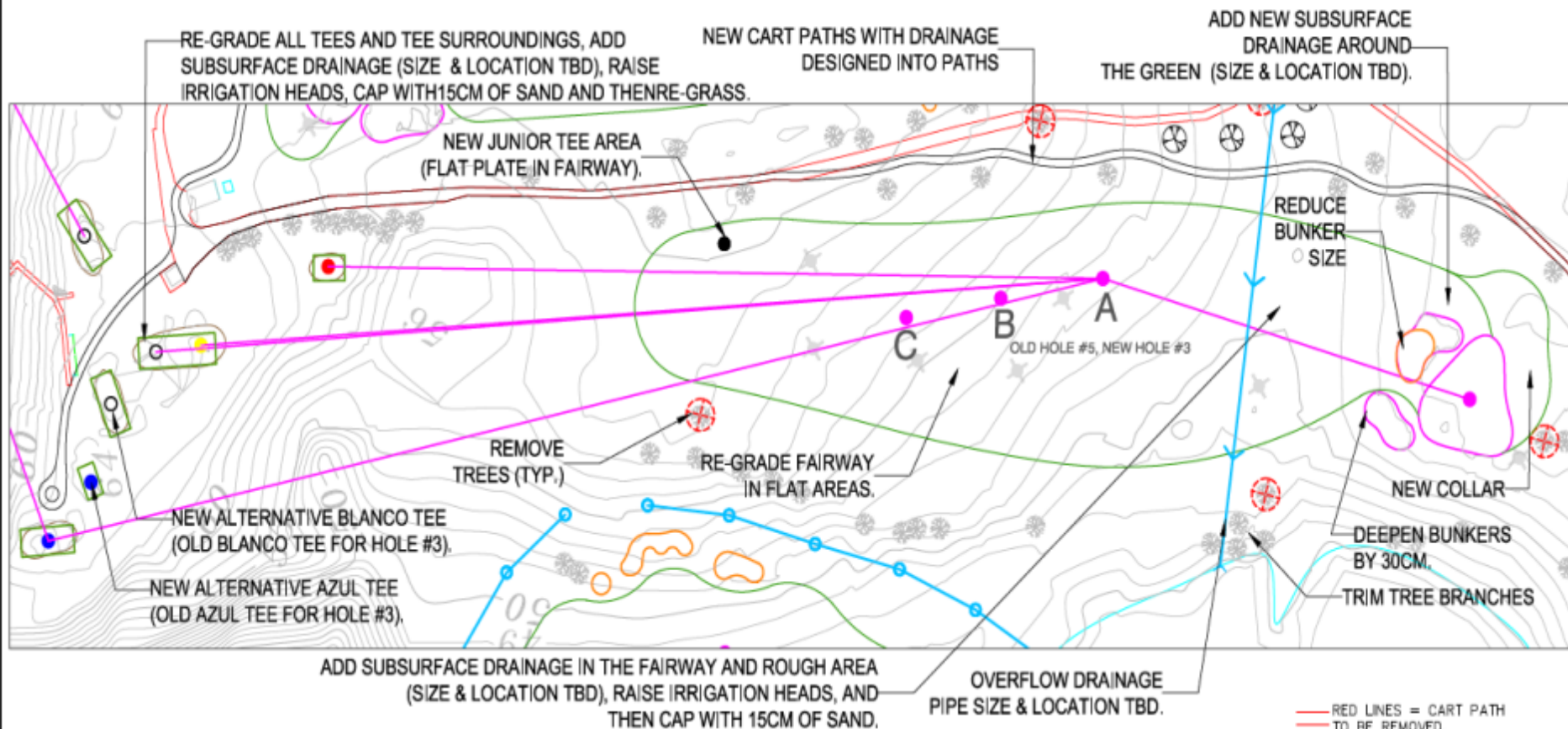
13/12/2012



EXTENDED COLLAR  
EXAMPLE

North Coordinate		
		
No.	Revision/Change	Fecha
Proyecto: Nombre y Ubicación <b>MASTER PLAN DE RENOVACION</b> FASE I MASTER PLAN PRELIMINAR		
 <b>EPYPSA</b> <small>EPYPSA CORP</small> <small>2000 Westchester</small> <small>100-100</small> <small>New York City, NY 10027</small> <small>1-800-368-4862 www.epypsa.com</small>		
 <small>271 Highland Court</small> <small>Bedford, MA 01730</small> <small>508-865-1888 www.rhgd.com</small> <small>508-865-2822 fax www.rhgd.com</small>		
Proyecto: Nombre y Ubicación <b>CLUB DE GOLF DE PANAMA</b>		
		
Fecha:		
Fecha: <b>13/12/2012</b>		No. de Hoja: <b>G-2A</b>
Escala: 1:1000 a 3000		

# PRELIMINARY MASTER PLAN HOLE #3 (OLD #5)



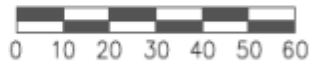
SCORECARD					
	Azul	Blanco	Amarillo	Rojo	PAR
EXISTING:	408	372	361	324	4
PROPOSED:	408	372	361	324	4

● JUNIOR TEE PLATE = 219 YARDS PAR 4

SHOT MATRIX				
	Azul	Blanco	Amarillo	Rojo
A:	300	264	253	216
B:	275	239	228	191
C:	250	214	203	166



- RED LINES = CART PATH TO BE REMOVED.
- \* MAINTAIN 15CM OF APPROVED SAND IN ALL BUNKERS.
- \* ALL LAKE, BANK STABILIZATION, OVERFLOWS, MAINLINE DRAINAGE AND BRIDGE DESIGN BY EPYPSA
- \* TBD = TO BE DETERMINED



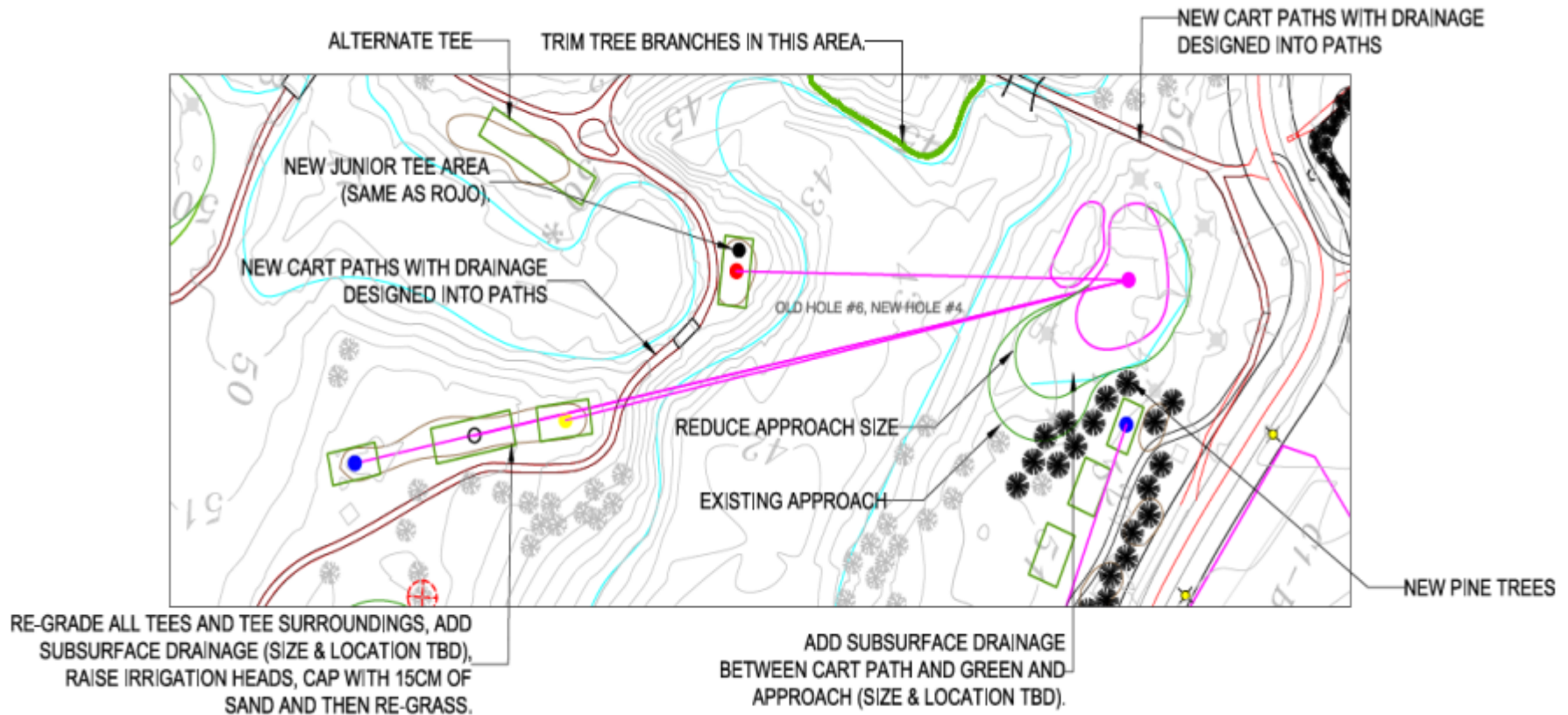
1:1,000, 1MM = 1M

13/12/2012

G-3

# PRELIMINARY MASTER PLAN

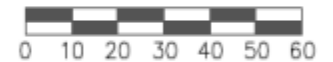
## HOLE #4 (OLD #6)



	SCORECARD				
	Azul	Blanco	Amarillo	Rojo	PAR
EXISTING:	213	184	160	107	3
PROPOSED:	213	184	160	107	3

● JUNIOR TEE PLATE = 107 YARDS PAR 3

- RED LINES = CART PATH TO BE REMOVED.
- \* MAINTAIN 15CM OF APPROVED SAND IN ALL BUNKERS.
- \* ALL LAKE, BANK STABILIZATION, OVERFLOWS, MAINLINE DRAINAGE AND BRIDGE DESIGN BY EPYPSA
- \* TBD = TO BE DETERMINED

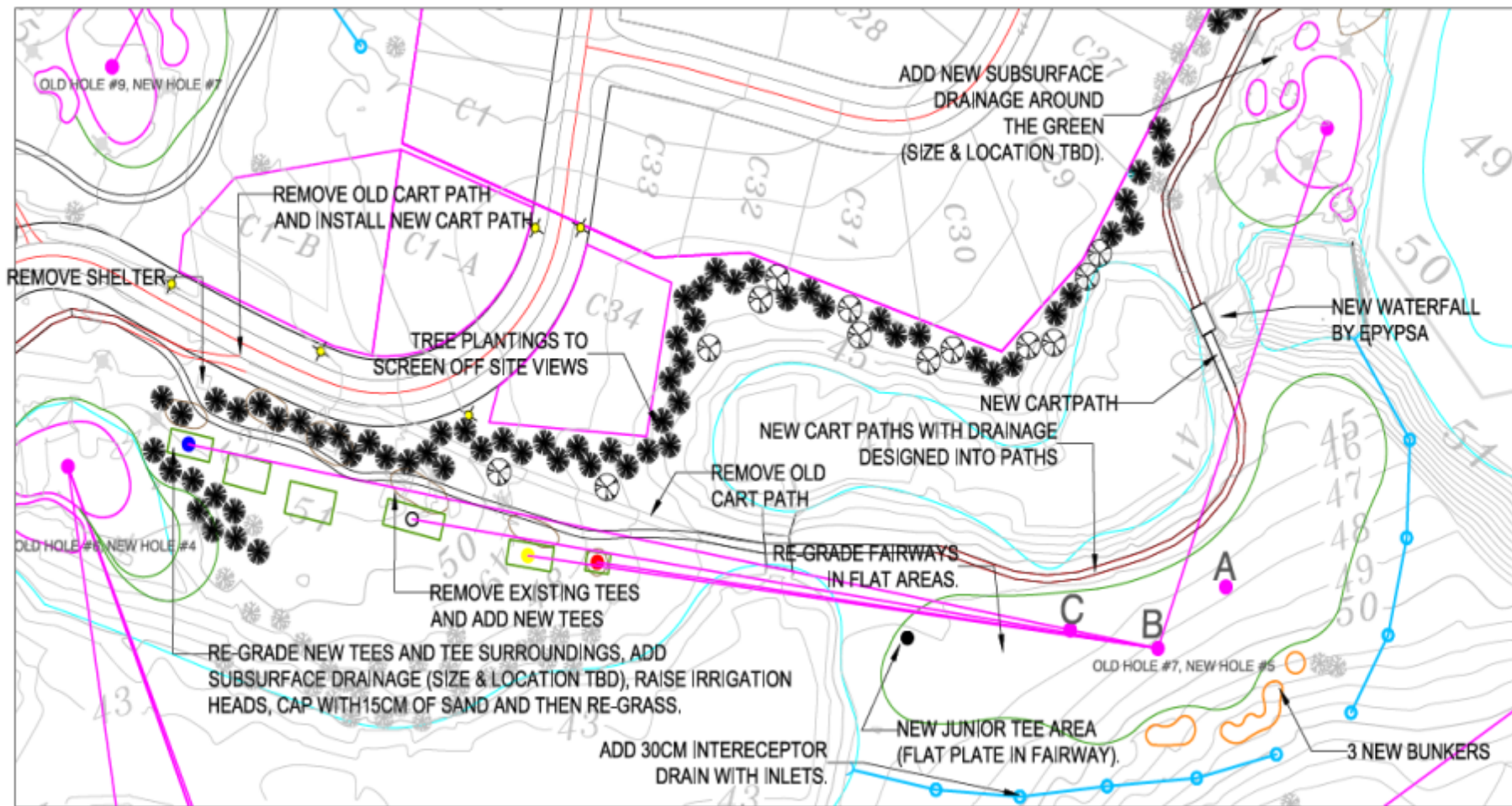


1:1,000, 1MM = 1M

13/12/2012

G-4

# PRELIMINARY MASTER PLAN HOLE #5 (OLD #7)



### SCORECARD

	Azul	Blanco	Amarillo	Rojo	PAR
EXISTING:	398	336	300	280	4
PROPOSED:	398	336	300	280	4

● JUNIOR TEE PLATE = 207 YARDS PAR 4

### SHOT MATRIX

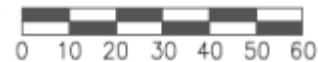
	Azul	Blanco	Amarillo	Rojo
A:	300	238	202	182
B:	275	213	177	157
C:	250	188	152	132

— RED LINES = CART PATH TO BE REMOVED.

\*MAINTAIN 15CM OF APPROVED SAND IN ALL BUNKERS.

\*ALL LAKE, BANK STABILIZATION, OVERFLOWS, MAINLINE DRAINAGE AND BRIDGE DESIGN BY EPYPSA

\* TBD = TO BE DETERMINED



1:1,000, 1MM = 1M

13/12/2012

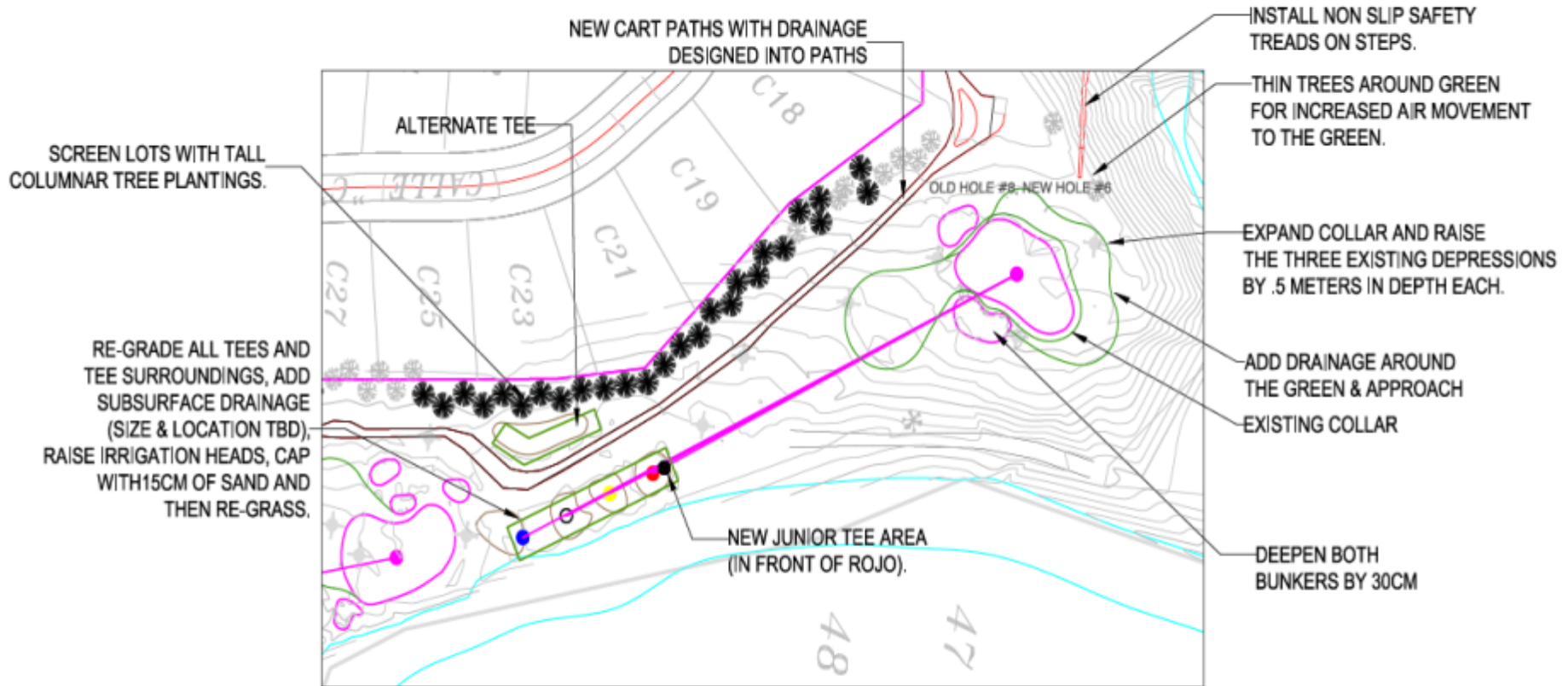
G-5

# Landing Zone Needs More Definition



# PRELIMINARY MASTER PLAN

## HOLE #6 (OLD #8)



### SCORECARD

	Azul	Blanco	Amarillo	Rojo	PAR
EXISTING:	147	136	126	110	3
PROPOSED:	147	136	126	110	3

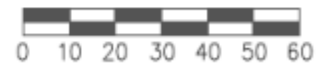
● JUNIOR TEE PLATE = 109 YARDS PAR 3

— RED LINES = CART PATH TO BE REMOVED.

\*MAINTAIN 15CM OF APPROVED SAND IN ALL BUNKERS.

\*ALL LAKE, BANK STABILIZATION, OVERFLOWS, MAINLINE DRAINAGE AND BRIDGE DESIGN BY EPYPSA

\* TBD = TO BE DETERMINED

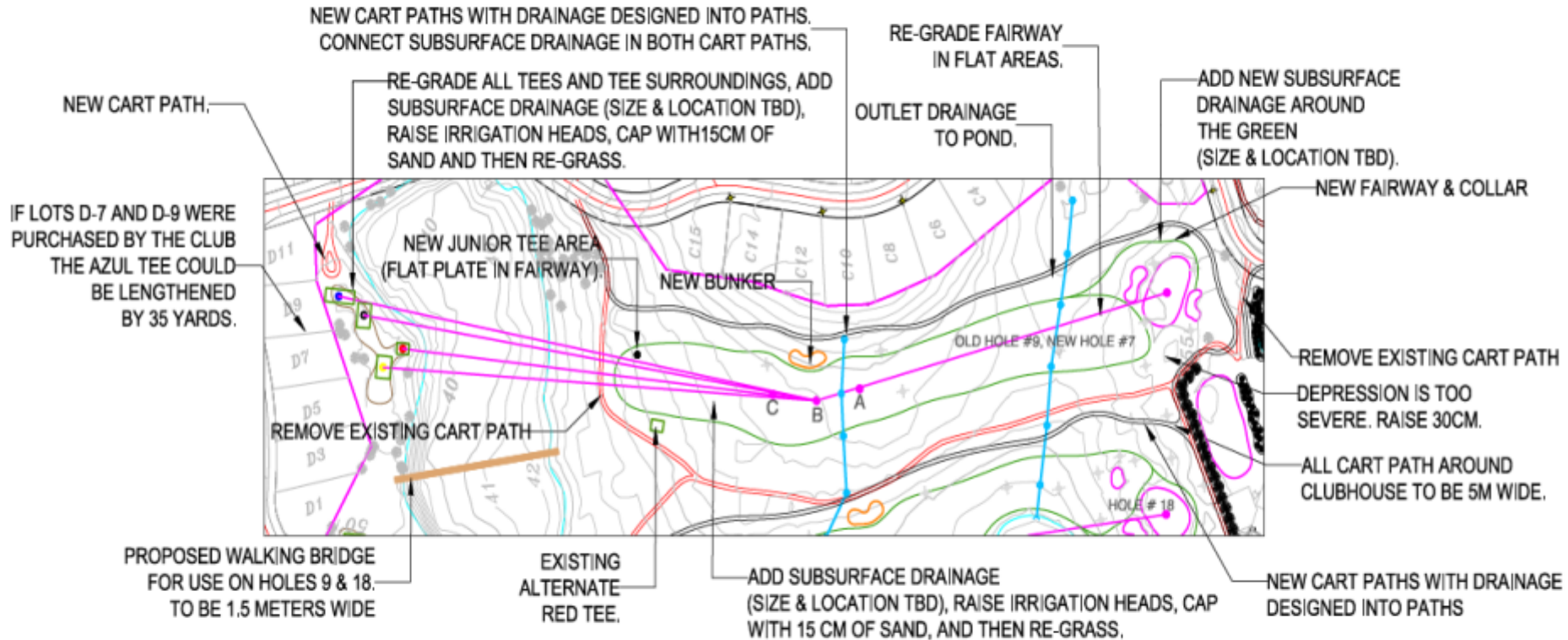


1:1,000, 1MM = 1M

13/12/2012



# PRELIMINARY MASTER PLAN HOLE #7 (OLD #9)



- RED LINES = CART PATH TO BE REMOVED.
- \*MAINTAIN 15CM OF APPROVED SAND IN ALL BUNKERS.
- \*ALL LAKE, BANK STABILIZATION, OVERFLOWS, MAINLINE DRAINAGE AND BRIDGE DESIGN BY EPYPSA
- \* TBD = TO BE DETERMINED

	SCORECARD				
	Azul	Blanco	Amarillo	Rojo	PAR
EXISTING:	476	461	450	439	5
PROPOSED:	476	461	450	439	5

● JUNIOR TEE PLATE = 319 YARDS PAR 5

	SHOT MATRIX			
	Azul	Blanco	Amarillo	Rojo
A:	300	285	274	263
B:	275	260	249	238
C:	250	235	224	213



1:2,000, 1MM = 2M

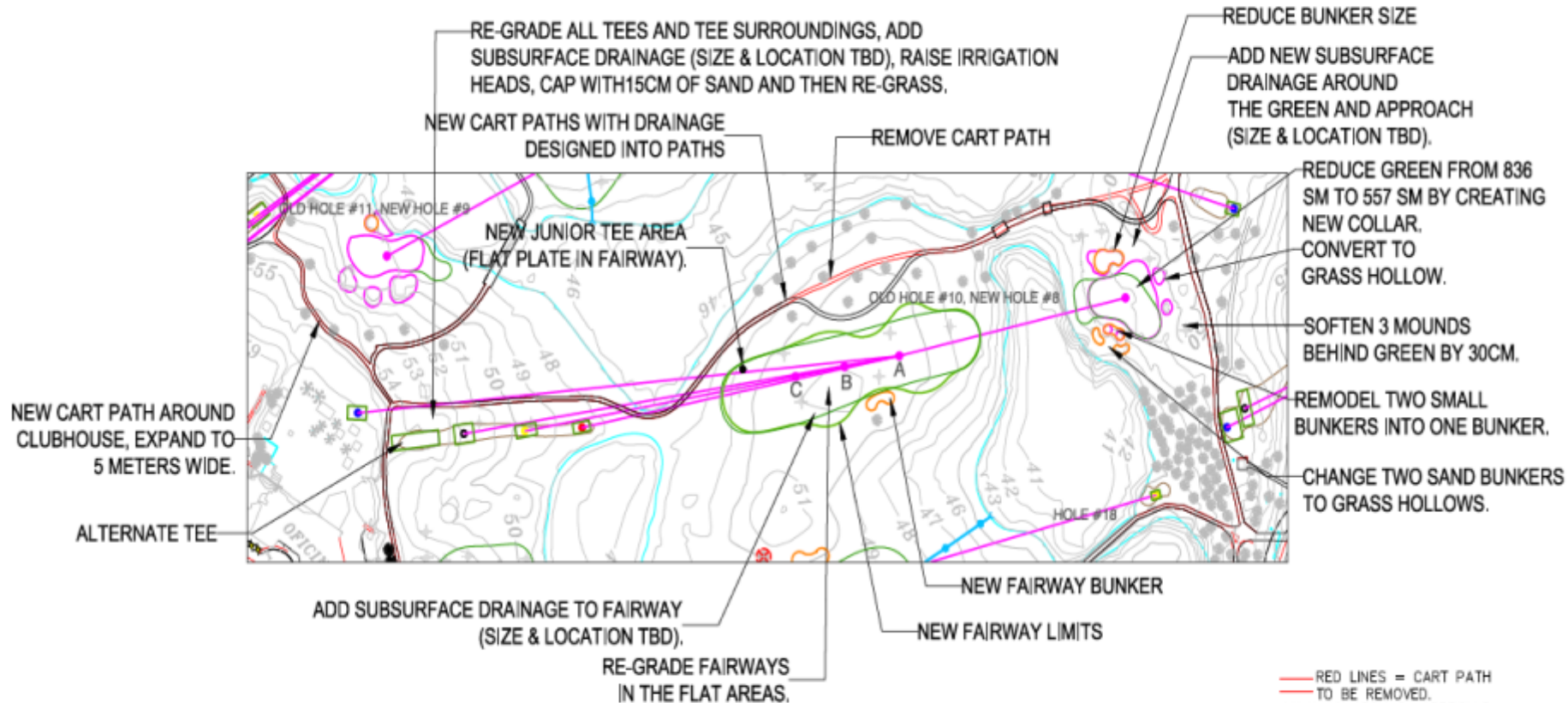
13/12/2012

# Hole 7 (Old #9)



New Fairway Bunker

# PRELIMINARY MASTER PLAN HOLE #8 (OLD #10)



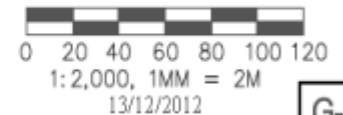
	SCORECARD				
	Azul	Blanco	Amarillo	Rojo	PAR
EXISTING:	434	369	337	307	4
PROPOSED:	434	369	337	307	4

● JUNIOR TEE PLATE = 218 YARDS PAR 4

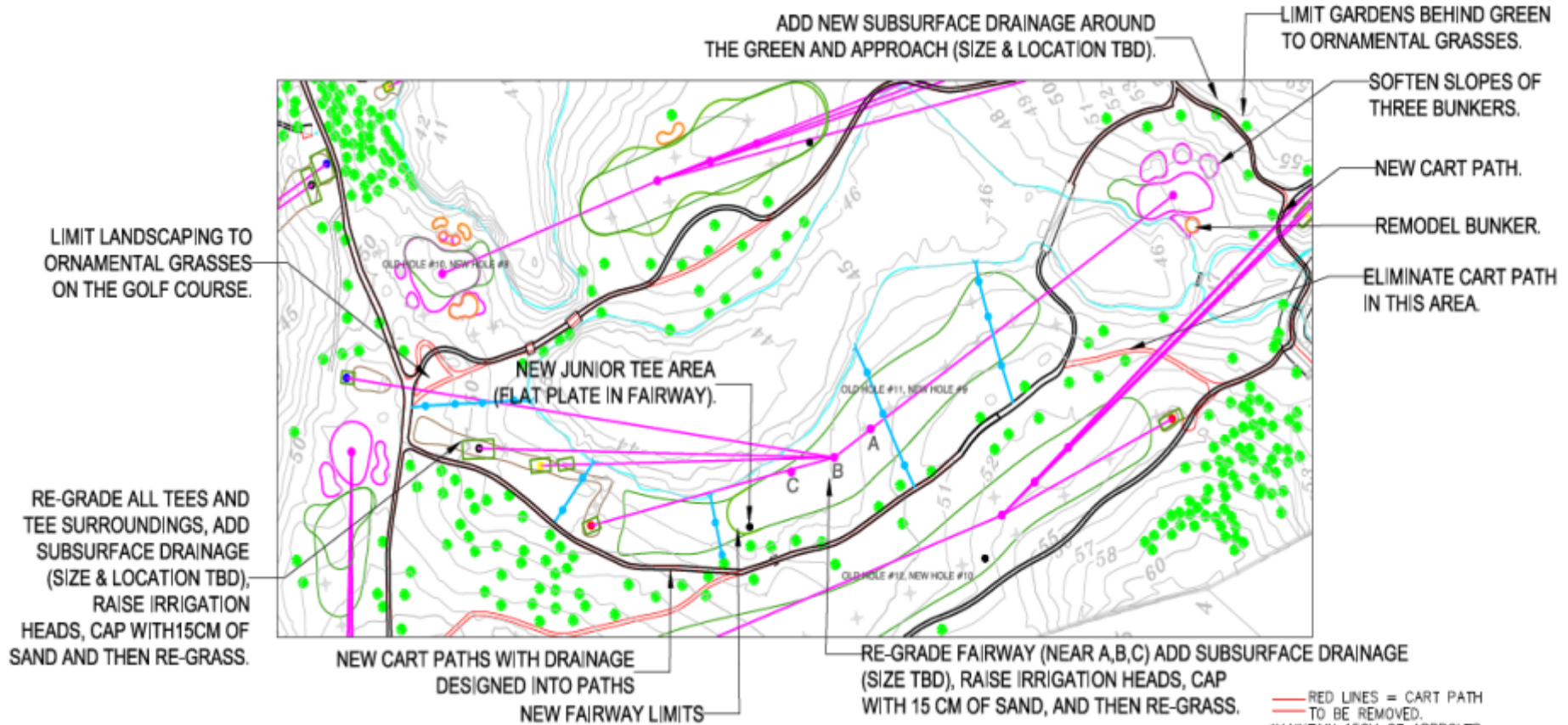
	SHOT MATRIX			
	Azul	Blanco	Amarillo	Rojo
A:	300	235	203	173
B:	275	210	178	148
C:	250	185	153	123



- RED LINES = CART PATH TO BE REMOVED.
- \* MAINTAIN 15CM OF APPROVED SAND IN ALL BUNKERS.
- \* ALL LAKE, BANK STABILIZATION, OVERFLOWS, MAINLINE DRAINAGE AND BRIDGE DESIGN BY EPYPSA
- \* TBD = TO BE DETERMINED



# PRELIMINARY MASTER PLAN HOLE #9 (OLD #11)



RE-GRADE ALL TEES AND TEE SURROUNDINGS, ADD SUBSURFACE DRAINAGE (SIZE & LOCATION TBD), RAISE IRRIGATION HEADS, CAP WITH 15CM OF SAND AND THEN RE-GRASS.

NEW CART PATHS WITH DRAINAGE DESIGNED INTO PATHS

NEW FAIRWAY LIMITS

RE-GRADE FAIRWAY (NEAR A,B,C) ADD SUBSURFACE DRAINAGE (SIZE TBD), RAISE IRRIGATION HEADS, CAP WITH 15 CM OF SAND, AND THEN RE-GRASS.

SCORECARD					
	Azul	Blanco	Amarillo	Rojo	PAR
EXISTING:	498	421	397	366	5
PROPOSED:	498	421	397	366	5

● JUNIOR TEE PLATE = 289 YARDS PAR 5

SHOT MATRIX				
	Azul	Blanco	Amarillo	Rojo
A:	300	223	199	168
B:	275	198	174	143
C:	250	173	149	118

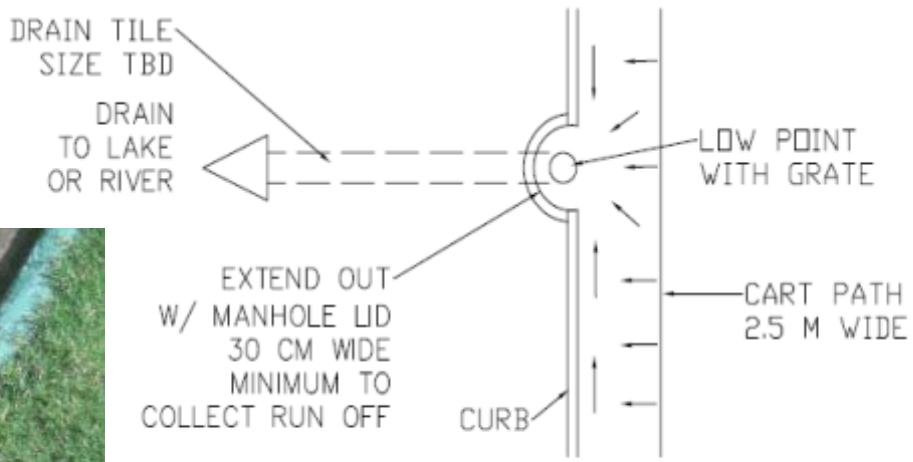
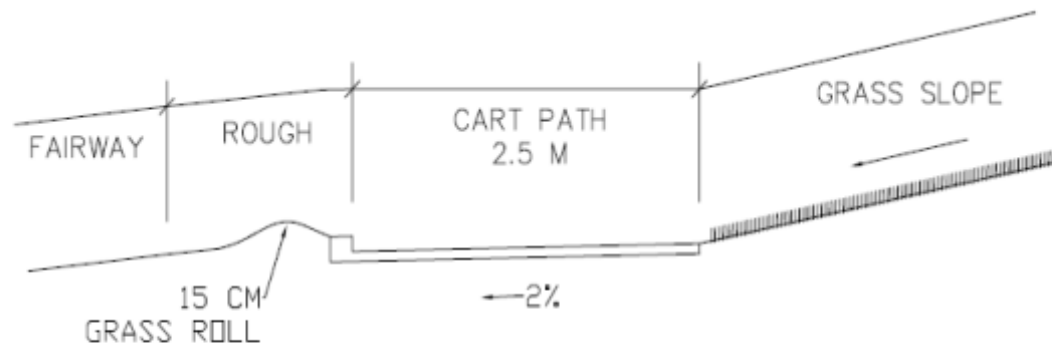


1:2,000, 1MM = 2M

November 26, 2012

- RED LINES = CART PATH TO BE REMOVED.
- \*MAINTAIN 15CM OF APPROVED SAND IN ALL BUNKERS.
- \*ALL LAKE, BANK STABILIZATION, OVERFLOWS, MAINLINE DRAINAGE AND BRIDGE DESIGN BY EPYPSA
- \* TBD = TO BE DETERMINED

# NEW CART PATH DETAIL



NOT TO SCALE

Notas Generales		
No.	Revisión/Comisión	Fecha

Empresa Autor y Diseñador

**MASTER PLAN DE RENOVACIÓN FASE I MASTER PLAN PRELIMINAR**

**EPYPSA**  
US EPPSA CORP  
 4511 18th  
 New York City, NY 10012  
 +1 212 268 0842 www.epypsa.com

**Raymond Hearn**  
*Golf Course Designers, Inc.*  
331 Algonquin Court  
 Montreal, Quebec H3L 2K4  
 514 334 1881 www.rhgi.com  
 514 334 1882 fax

Proyecto Autor y Diseñador

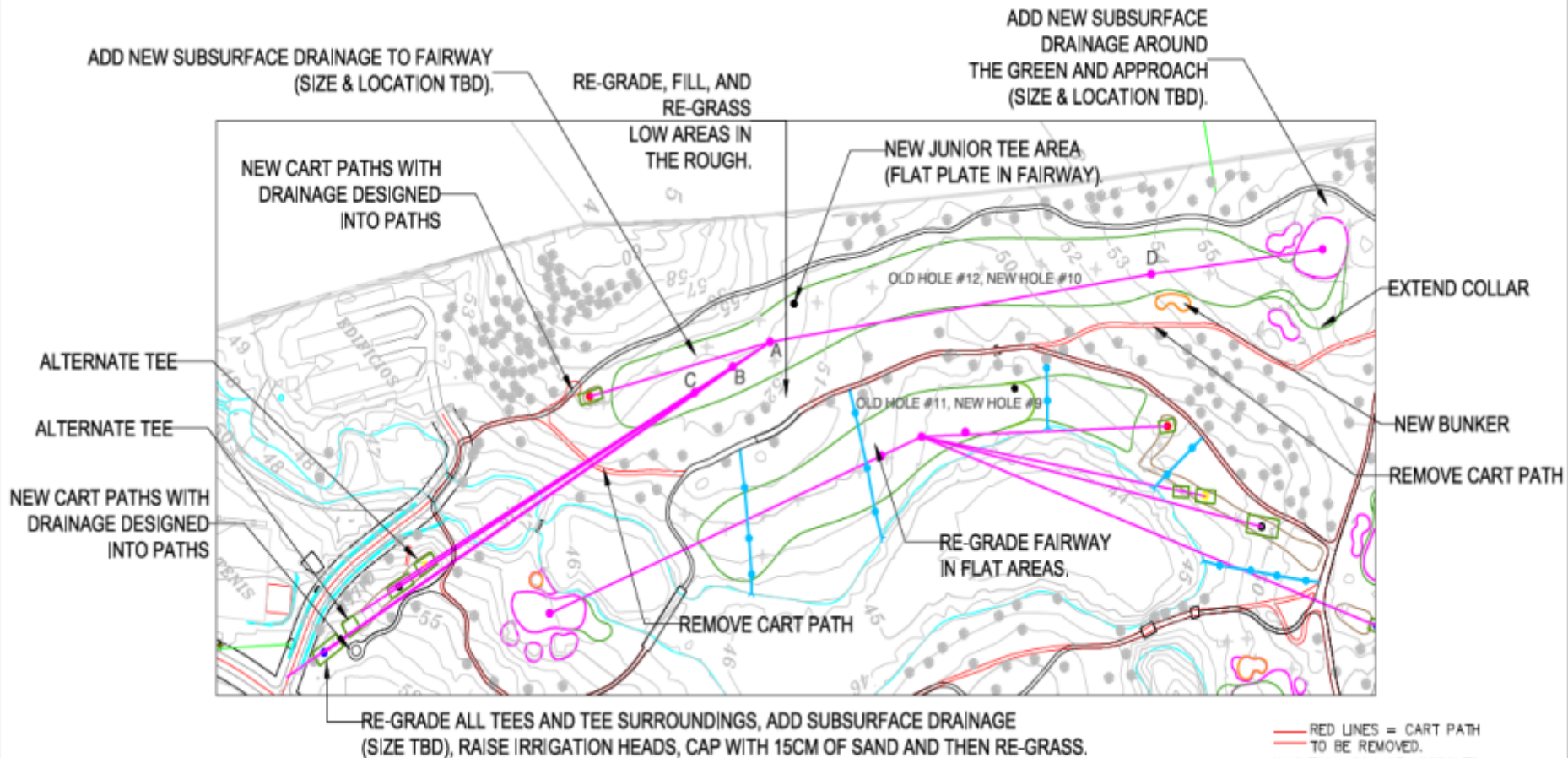
**CLUB DE GOLF DE PANAMA**

**CLUB**  
Club de Golf de Panamá  
 Fundado en 1955

Título	
Fecha: 13/12/12	Nº de Hoja
Cuadro INDICADAS	<b>G-CPA</b>

# PRELIMINARY MASTER PLAN

## HOLE #10 (OLD #12)



SCORECARD					
	Azul	Blanco	Amarillo	Rojo	PAR
EXISTING:	593	566	544	422	5
PROPOSED:	610	566	544	422	5

● JUNIOR TEE PLATE = 306 YARDS PAR 5

SHOT MATRIX					
	Azul	Blanco	Amarillo	Rojo	D
A:	300	256	234	112	220
B:	275	231	209	87	245
C:	250	206	184	62	270



- RED LINES = CART PATH TO BE REMOVED.
- \*MAINTAIN 15CM OF APPROVED SAND IN ALL BUNKERS.
- \*ALL LAKE, BANK STABILIZATION, OVERFLOWS, MAINLINE DRAINAGE AND BRIDGE DESIGN BY EPYPSA
- \* TBD = TO BE DETERMINED



1:2,000, 1MM = 2M

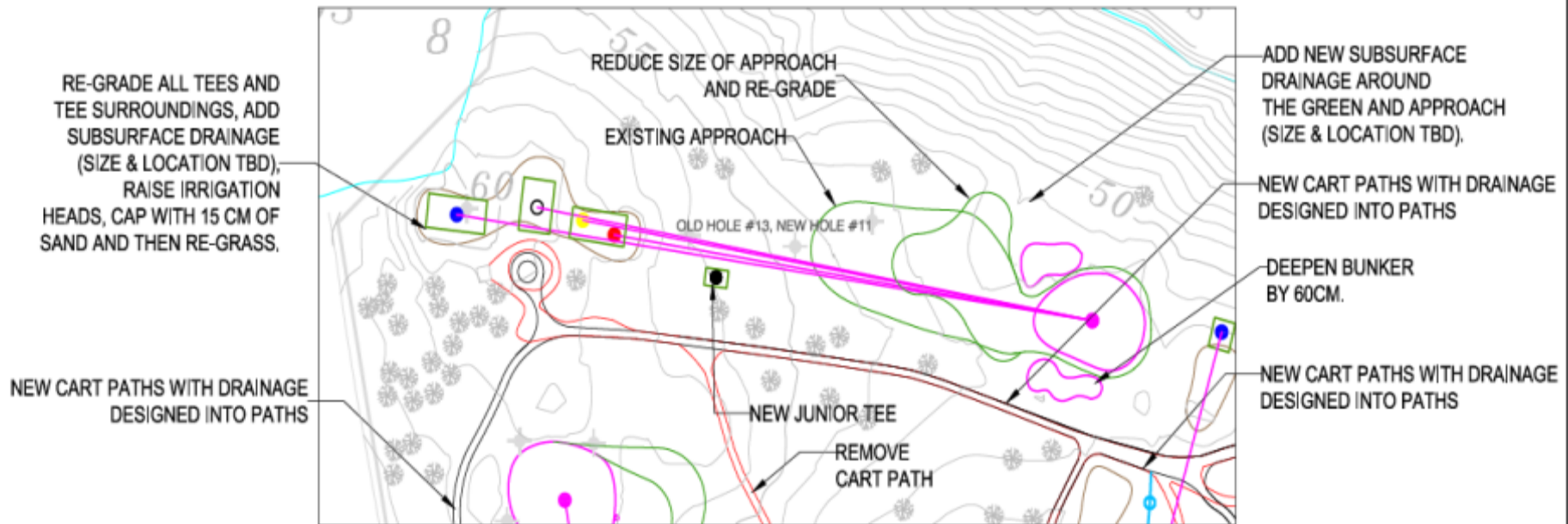
13/12/2012

G-10

# Sand Capping of a Fairway



# PRELIMINARY MASTER PLAN HOLE #11 (OLD #13)



SCORECARD					
	Azul	Blanco	Amarillo	Rojo	PAR
EXISTING:	180	157	145	135	3
PROPOSED:	180	157	145	135	3

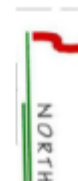
● JUNIOR TEE PLATE = 104 YARDS PAR 3

— RED LINES = CART PATH  
— TO BE REMOVED.

\*MAINTAIN 15CM OF APPROVED SAND IN ALL BUNKERS.

\*ALL LAKE, BANK STABILIZATION, OVERFLOWS, MAINLINE DRAINAGE AND BRIDGE DESIGN BY EPYPSA

\* TBD = TO BE DETERMINED

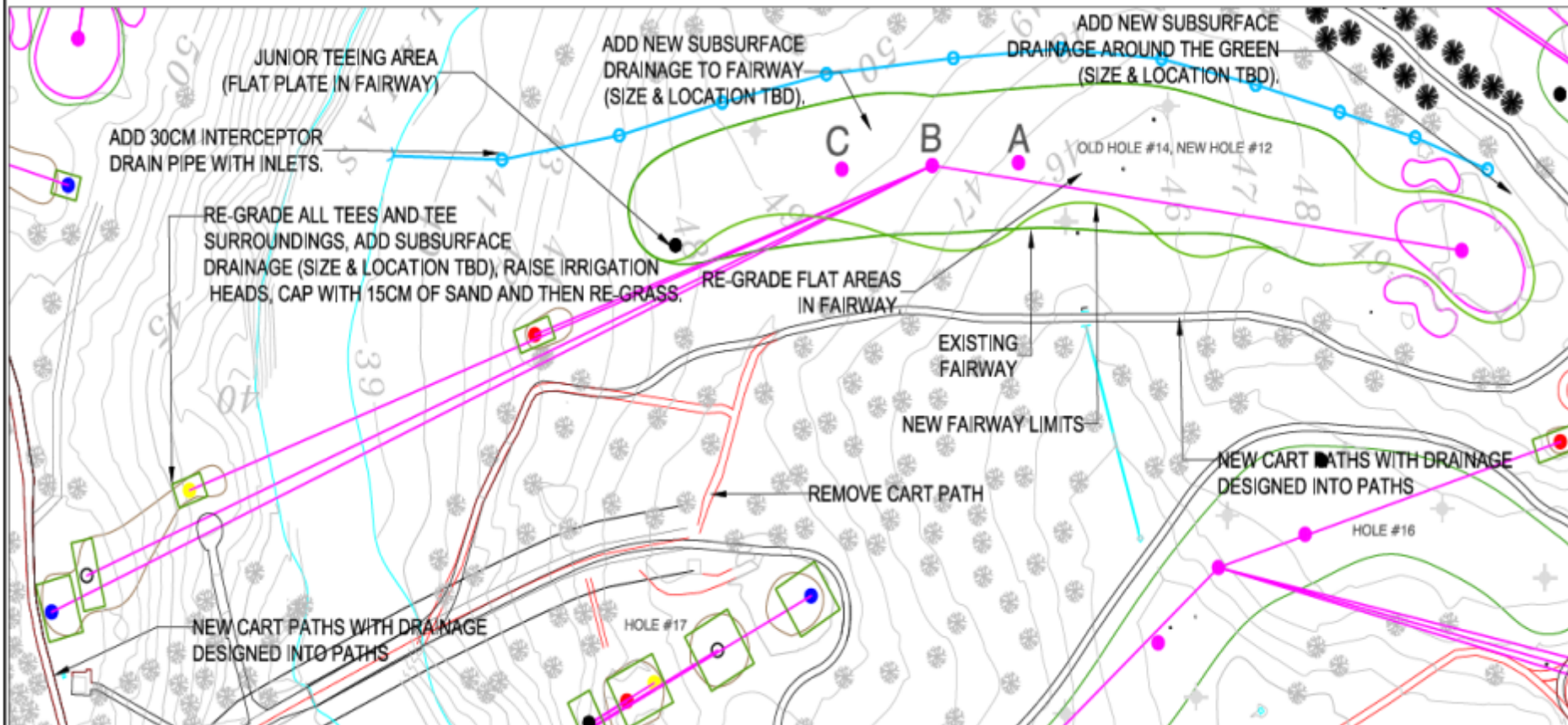


1:1,000, 1MM = 1M

13/12/2012



# PRELIMINARY MASTER PLAN HOLE #12 (OLD #14)



## SCORECARD

	Azul	Blanco	Amarillo	Rojo	PAR
EXISTING:	421	410	370	268	4
PROPOSED:	421	410	370	268	4

● JUNIOR TEE PLATE = 224 YARDS PAR 4

## SHOT MATRIX

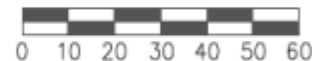
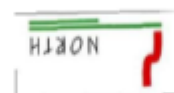
	Azul	Blanco	Amarillo	Rojo
A:	300	289	249	247
B:	275	264	224	222
C:	250	239	199	197

— RED LINES = CART PATH TO BE REMOVED.

\*MAINTAIN 15CM OF APPROVED SAND IN ALL BUNKERS.

\*ALL LAKE, BANK STABILIZATION, OVERFLOWS, MAINLINE DRAINAGE AND BRIDGE DESIGN BY EPYPSA

\* TBD = TO BE DETERMINED



1:1,000, 1MM = 1M

13/12/2012

# PRELIMINARY MASTER PLAN

## HOLE #13 (OLD # 15)



### SCORECARD

	Azul	Blanco	Amarillo	Rojo	PAR
EXISTING:	422	350	322	288	4
PROPOSED:	422	350	322	288	4
● JUNIOR TEE PLATE = 213 YARDS PAR 4					

### SHOT MATRIX

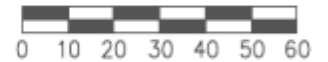
	Azul	Blanco	Amarillo	Rojo
A:	300	228	200	166
B:	275	203	175	141
C:	250	178	150	116

— RED LINES = CART PATH  
— TO BE REMOVED.

\*MAINTAIN 15CM OF APPROVED SAND IN ALL BUNKERS.

\*ALL LAKE, BANK STABILIZATION, OVERFLOWS, MAINLINE DRAINAGE AND BRIDGE DESIGN BY EPYPSA

\* TBD = TO BE DETERMINED



13/12/2012

G-13

# Photo of New #13 (Old Hole #15)

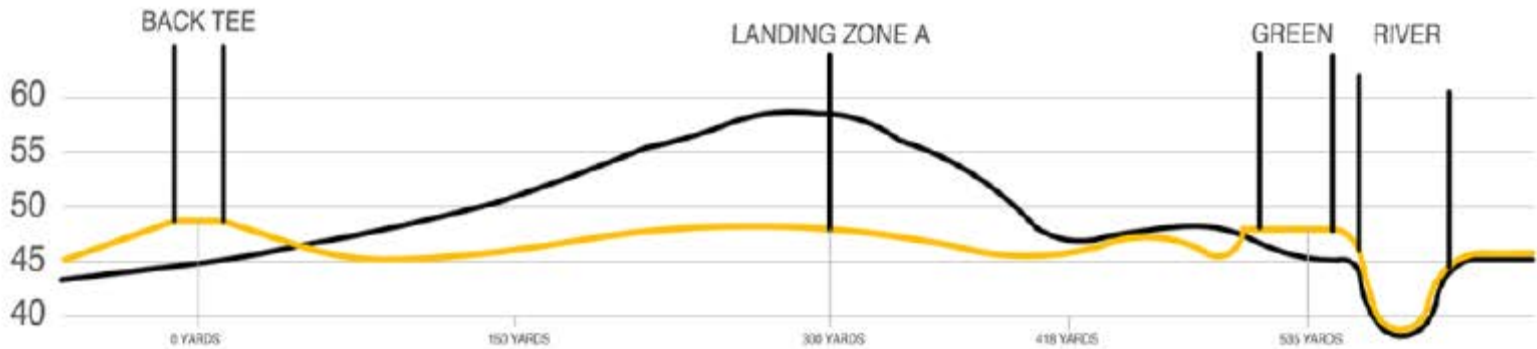
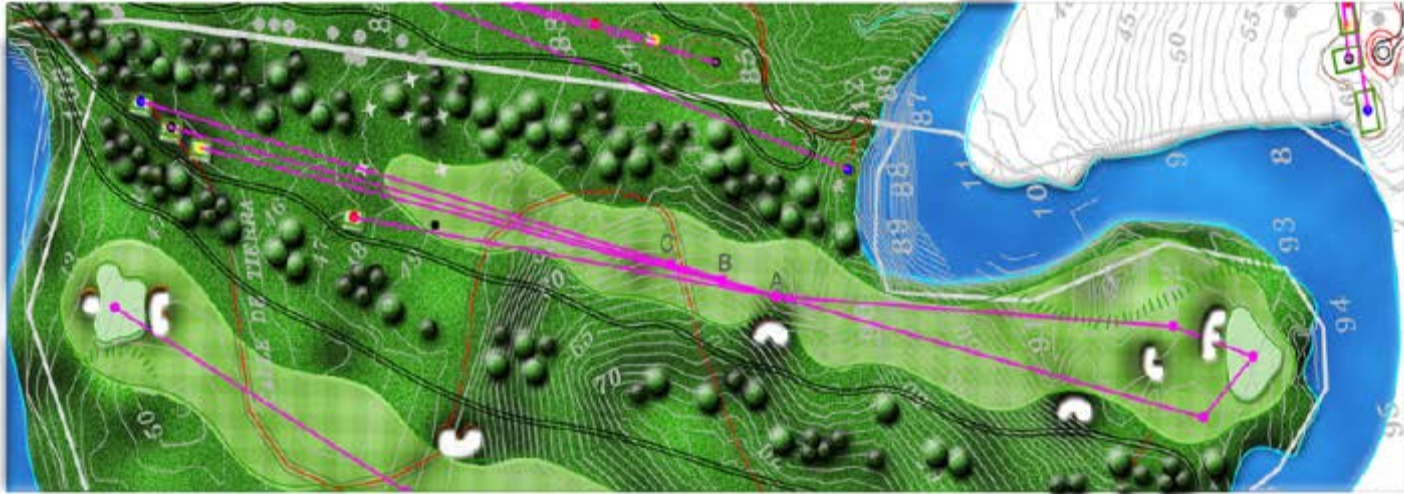


A good hole but the bunkers need to harmonize with the other bunkers on the golf course.



# PRELIMINARY MASTER PLAN NEW HOLE #14 CROSS SECTION

Azul	Blanco	Amarillo	Rojo	PAR
535	515	499	424	5



— EXISTING ELEVATION  
— PROPOSED ELEVATION



0 20 40 60 80 100 120  
1:2,000, 1MM = 2M

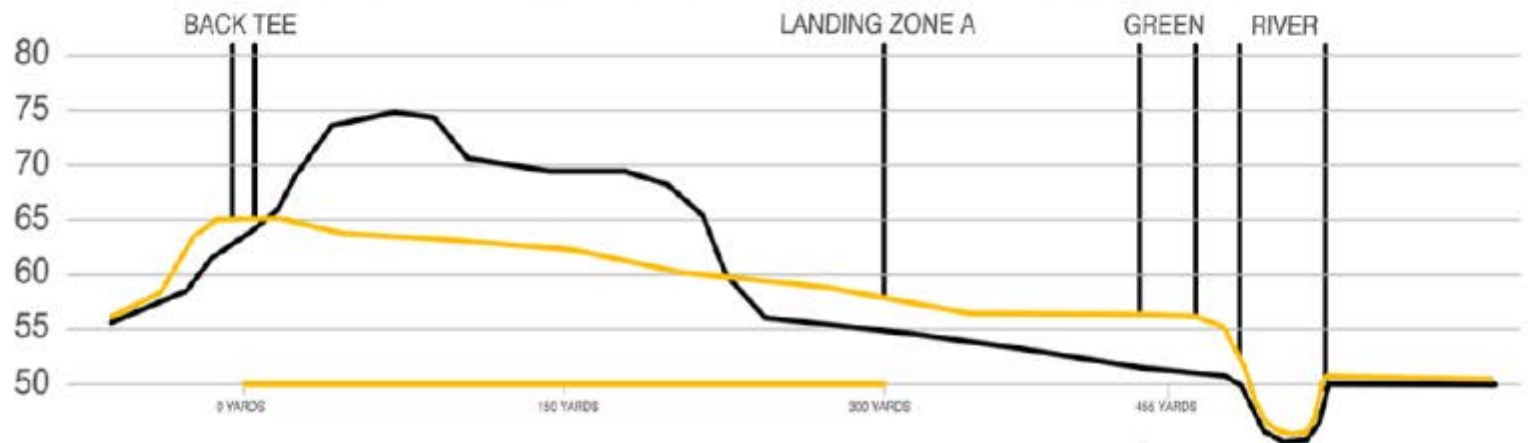
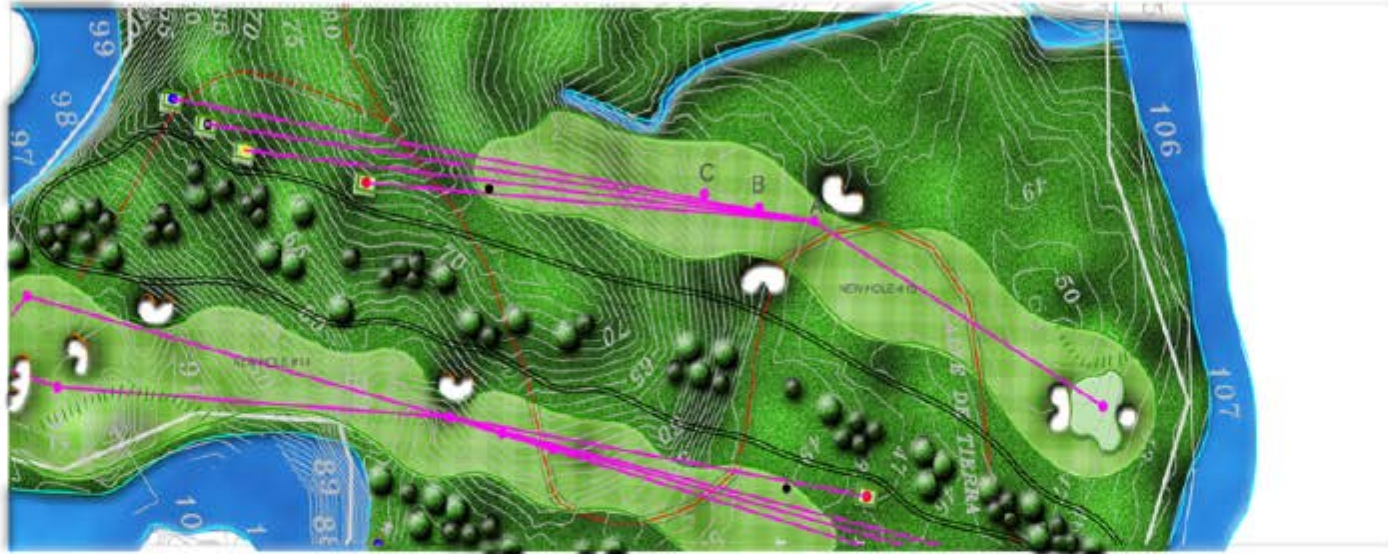
13/12/2012

G-14C

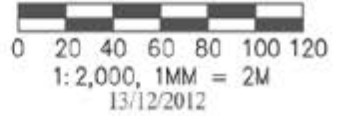
# PRELIMINARY MASTER PLAN

## NEW HOLE #15 CROSS SECTION

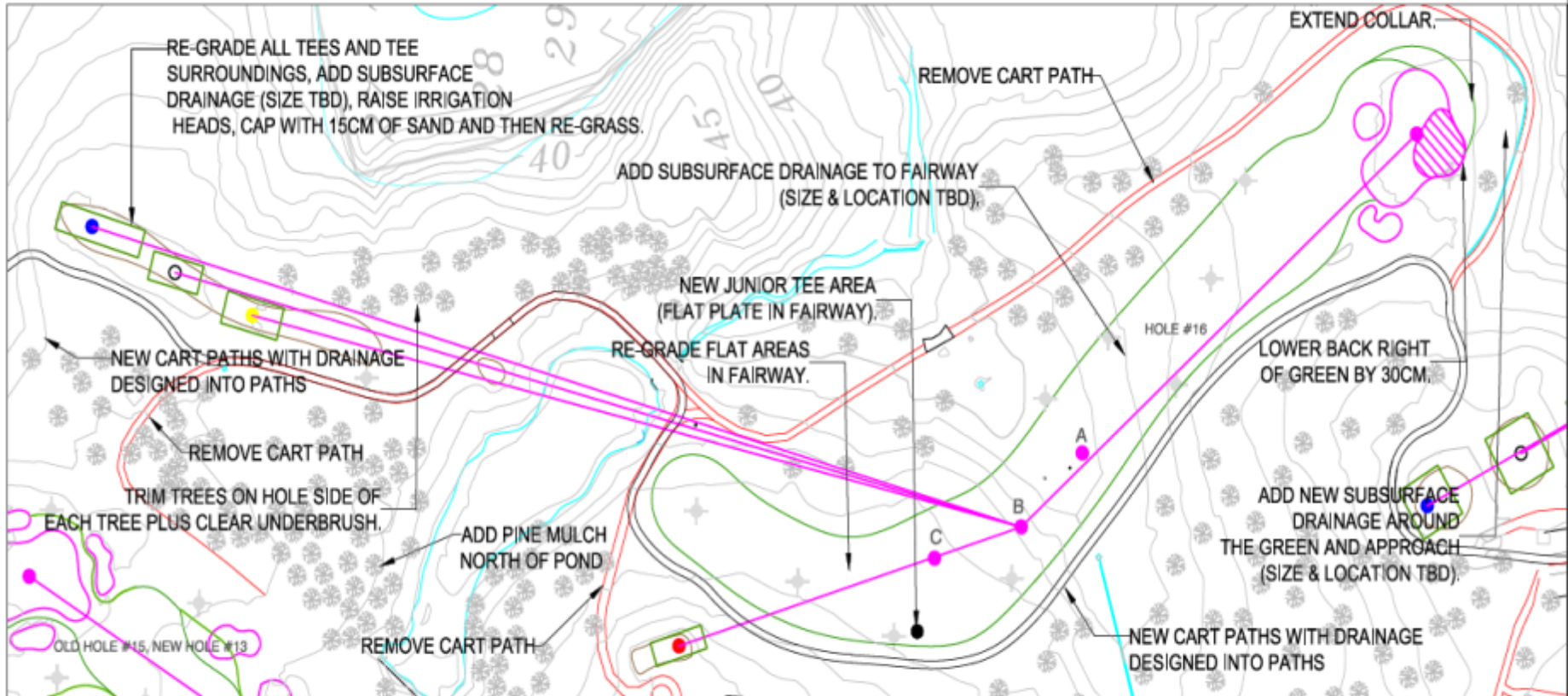
Azul - Blanco - Amarillo - Rojo PAR  
455 427 410 324 4



— EXISTING ELEVATION  
— PROPOSED ELEVATION



# PRELIMINARY MASTER PLAN HOLE #16



### SCORECARD

	Azul	Blanco	Amarillo	Rojo	PAR
EXISTING:	421	389	361	250	4
PROPOSED:	421	389	361	250	4

● JUNIOR TEE PLATE = 196 YARDS PAR 4

### SHOT MATRIX

	Azul	Blanco	Amarillo	Rojo
A:	300	268	240	229
B:	275	243	215	204
C:	250	218	190	179

— RED LINES = CART PATH  
— TO BE REMOVED.

\*MAINTAIN 15CM OF APPROVED SAND IN ALL BUNKERS.

\*ALL LAKE, BANK STABILIZATION, OVERFLOWS, MAINLINE DRAINAGE AND BRIDGE DESIGN BY EPYPSA  
\* TBD = TO BE DETERMINED

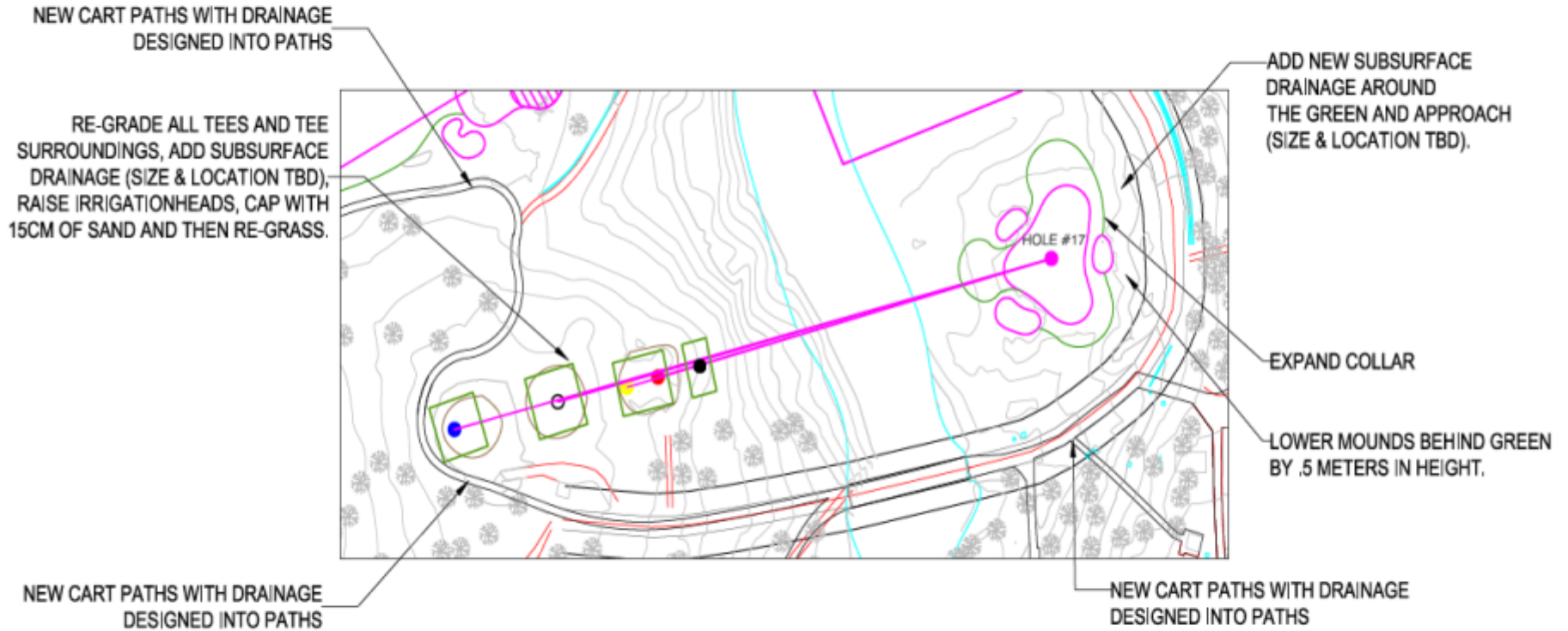


1:1,000, 1MM = 1M

13/12/2012

G-16

# PRELIMINARY MASTER PLAN HOLE #17

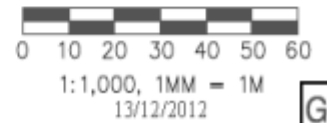


SCORECARD

	Azul	Blanco	Amarillo	Rojo	PAR
EXISTING:	165	142	120	112	3
PROPOSED:	165	142	120	112	3

● JUNIOR TEE PLATE = 99 YARDS PAR 3

- RED LINES = CART PATH TO BE REMOVED.
- \*MAINTAIN 15CM OF APPROVED SAND IN ALL BUNKERS.
- \*ALL LAKE, BANK STABILIZATION, OVERFLOWS, MAINLINE DRAINAGE AND BRIDGE DESIGN BY EPYPSA
- \* TBD = TO BE DETERMINED



# A Beautiful Par Three Hole # 17

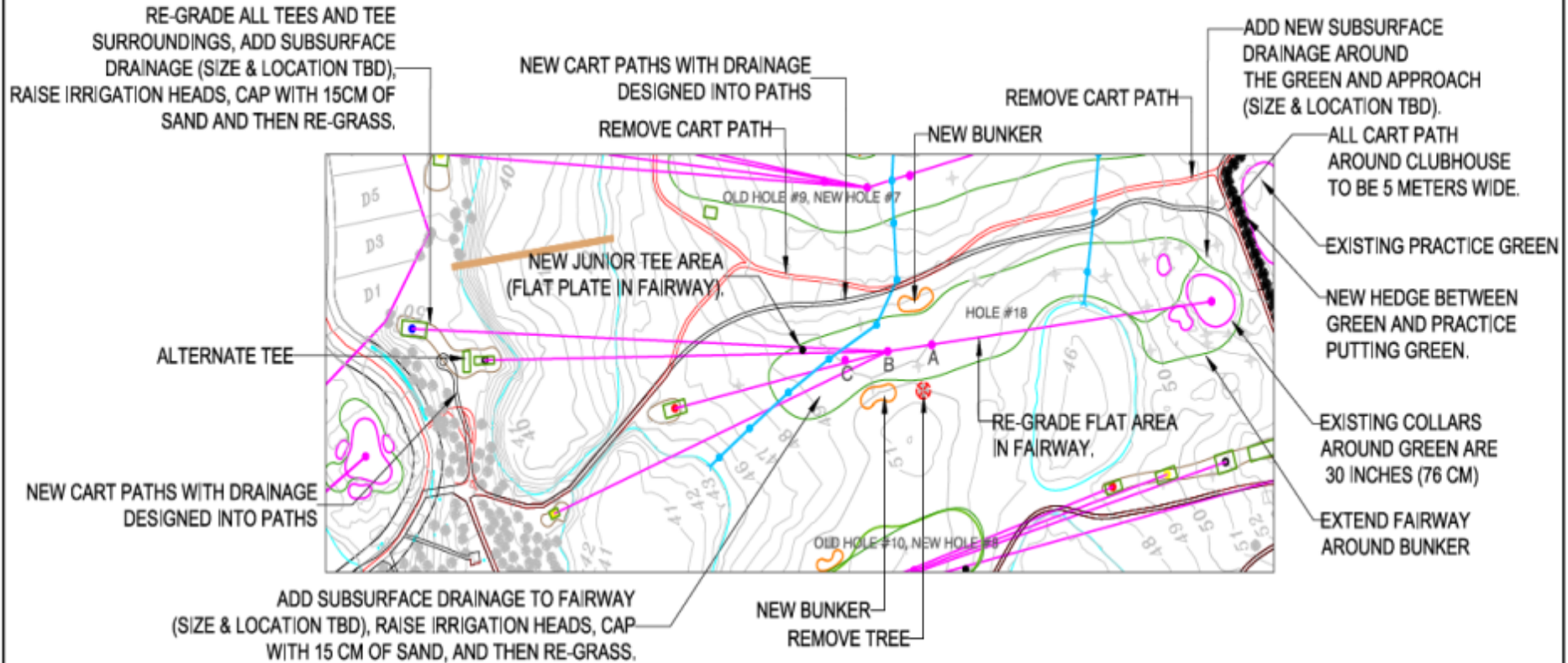




# Hole # 18 Needs More Visual Appeal



# PRELIMINARY MASTER PLAN HOLE #18



**SCORECARD**

	Azul	Blanco	Amarillo	Rojo	PAR
EXISTING:	458	414	395	315	4
PROPOSED:	458	414	395	315	4

● JUNIOR TEE PLATE = 240 YARDS PAR 4

**SHOT MATRIX**

	Azul	Blanco	Amarillo	Rojo
A:	300	256	237	157
B:	275	231	212	132
C:	250	206	187	107



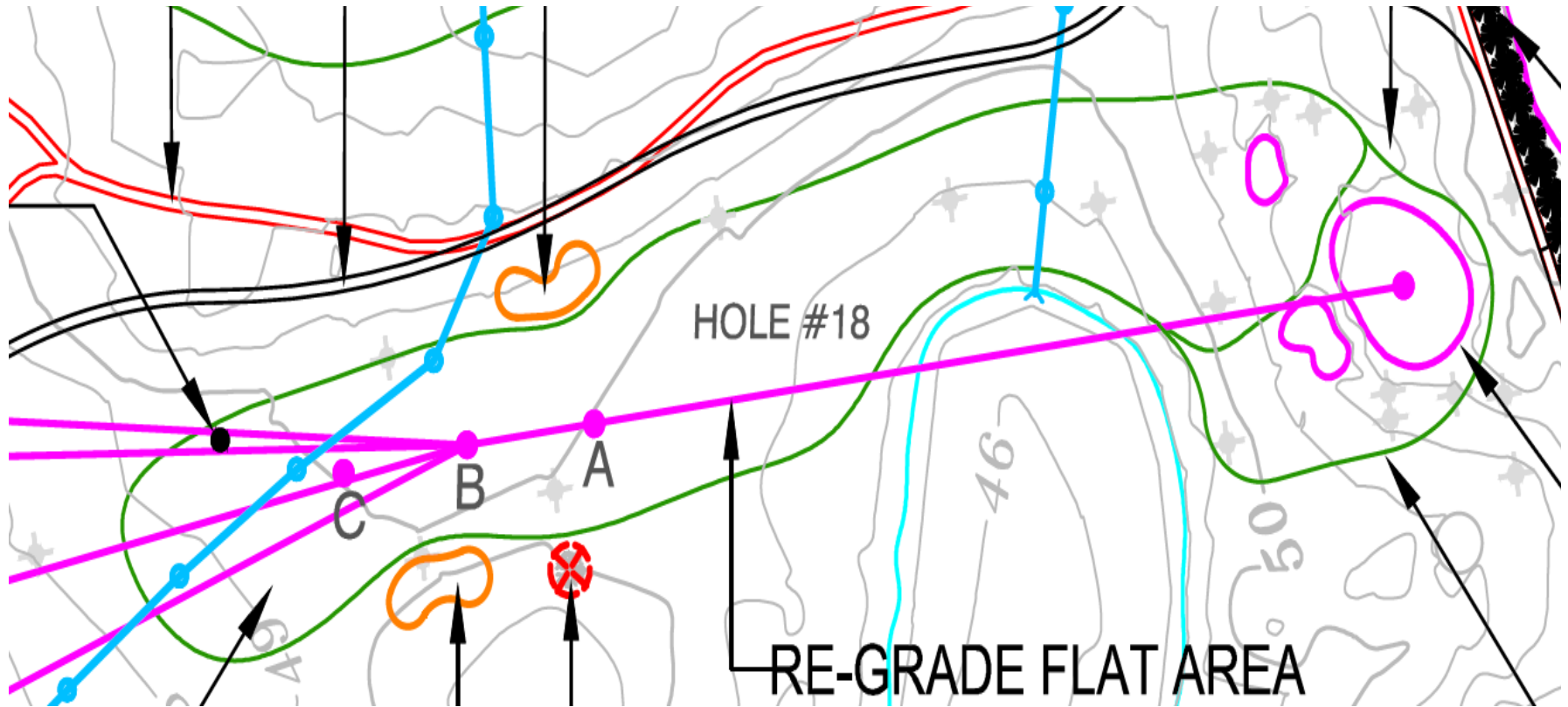
- RED LINES = CART PATH TO BE REMOVED.
- \*MAINTAIN 15CM OF APPROVED SAND IN ALL BUNKERS.
- \*ALL LAKE, BANK STABILIZATION, OVERFLOWS, MAINLINE DRAINAGE AND BRIDGE DESIGN BY EPYPSA
- † TBD = TO BE DETERMINED



1:2,000, 1MM = 2M

13/12/2012

# Improvements to Hole #18

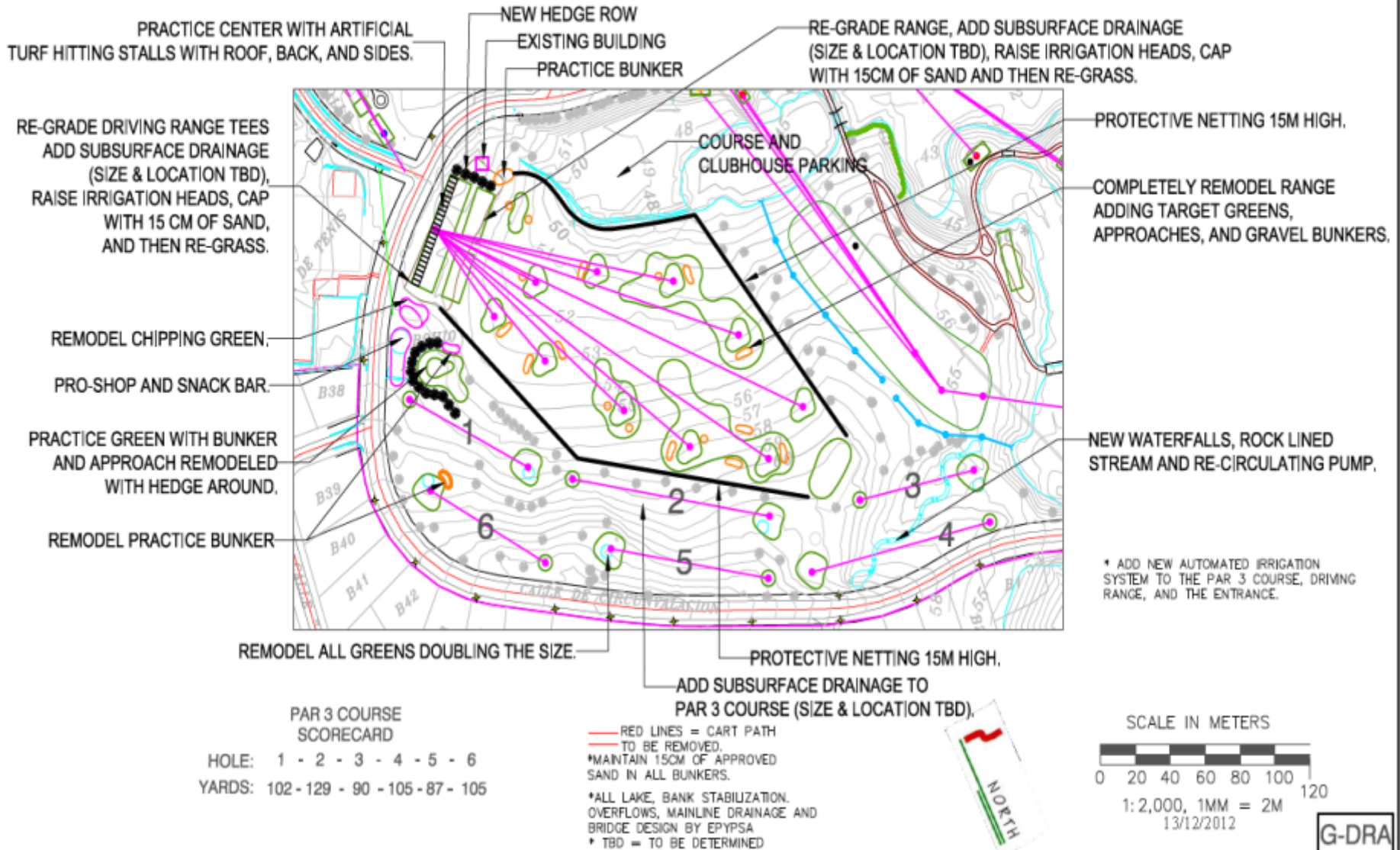


# Fairway to Extend Around the Bunker



# PRELIMINARY MASTER PLAN

Driving Range / Par 3



# PRELIMINARY MASTER PLAN

Driving Range / Par 3



\* ADD NEW AUTOMATED IRRIGATION SYSTEM TO THE PAR 3 COURSE, DRIVING RANGE, AND THE ENTRANCE.

### PAR 3 COURSE SCORECARD

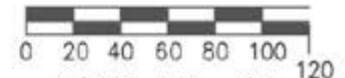
HOLE: 1 - 2 - 3 - 4 - 5 - 6  
YARDS: 102 - 129 - 90 - 105 - 87 - 105

— RED LINES = CART PATH TO BE REMOVED.  
\*MAINTAIN 15CM OF APPROVED SAND IN ALL BUNKERS.

\*ALL LAKE, BANK STABILIZATION, OVERFLOWS, MAINLINE DRAINAGE AND BRIDGE DESIGN BY EPYPSA  
\* TBD = TO BE DETERMINED



SCALE IN METERS



1:2,000, 1MM = 2M

13/12/2012

G-DRB

# DRIVING RANGE PRACTICE TEE SHELTERS



HIGH COST OPTION



MEDIUM COST OPTION



LOW COST OPTION

Notas Generales

<p>N</p> <p>ESCALA EN METROS</p> <p>INDICADAS</p>		
No.	Reserva/Cavallet	Fecha

Proyecto: nombre y dirección

**MASTER PLAN DE  
RENOVACIÓN**  
FASE I MASTER PLAN PRELIMINAR

**EPYPSA**  
INGENIEROS Y ARQUITECTOS

US EPIPSA S.P.A.  
CALLE 100  
BOGOTÁ, COLOMBIA  
TEL: 312 456 7890

**Raymond Hearn**  
Golf Course Design, Inc.  
377 Highlands Court  
Madison, Michigan 48064-0001  
416.386.7800 www.rhdesign.com  
416.386.7811 fax rhdesign.com

Proyecto: nombre y dirección

**CLUB DE GOLF DE PANAMA**

Club de Golf de Panamá  
Fundado en 1952

Título	
Fecha 13/12/2012	Ed. de Hoja G-DRC
Código INDECADS	

# DRIVING RANGE BEFORE REMODELING

# DRIVING RANGE AFTER REMODELING





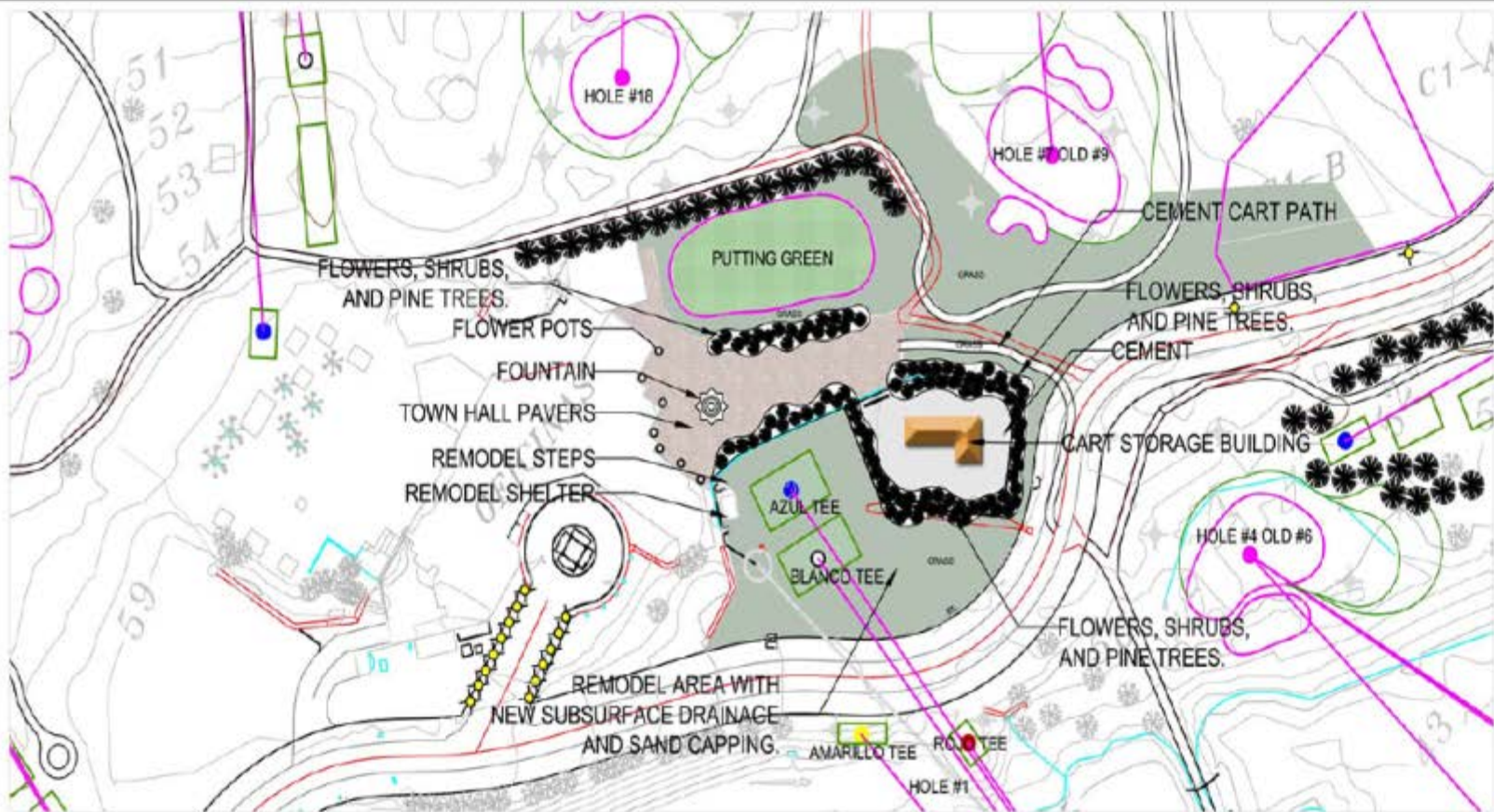


# Stone Bunkers



## Stone Size





CART STORAGE BUILDING OPTION



FOUNTAIN OPTION



TOWN HALL PAVER OPTION

Drawings Number y Descripción

**MASTER PLAN DE RENOVACION**  
FASE I MASTER PLAN PRELIMINAR

**EPYPSA**  
CORPORACION INGENIERIA Y ARQUITECTURA  
UN EPYPSA CORP  
333 West 42nd Street  
New York City, NY 10018  
Tel: 212 693-6200

**Raymond Hearn**  
Golf Course Planners, Inc.  
373 Highland Court  
Holland, Michigan 49424  
Tel: 616 781 7800  
www.rhpl.com  
rhpl@rhpl.com

Proyecto: Nombre y Dirección

**CLUB DE GOLF DE PANAMA**

**CLUB**  
Club de Golf de Panamá

Fecha: 13/12/2012 de 26 Hojas

Cuadro: G-L

INDICADAS

Issue 12 | Fall 2012

# BY DESIGN



Excellence in Golf Design from the American Society of Golf Course Architects




## New perspectives

How one club is offering many alternative ways to play its course

# 18 Hole Junior Course

**MASTER PLAN**



**ISLAND Hills**  
GOLF CLUB  
Centreville, Michigan


**SCORECARD**

HOLE	1	2	3	4	5	6	7	8	9	10	11	12	13	14	15	16	17	18	TOTAL	
PAR	3	4	3	4	3	4	3	4	3	4	3	4	3	4	3	4	3	4	36	
SCORE																				

**Raymond Hearn**  
Golf Course Design, Inc.  
272 Highland Court  
Royal Oak, Michigan 48067  
482-2000    www.rhdesign.com  
rhdesign.com

January 6, 2012

**18 HOLE "JUNIOR" COURSE**



**ISLAND Hills**  
GOLF CLUB  
CENTREVILLE, MICHIGAN

**SCORECARD**

HOLE	1	2	3	4	5	6	7	8	9	10	11	12	13	14	15	16	17	18	TOTAL	
PAR	3	4	3	4	3	4	3	4	3	4	3	4	3	4	3	4	3	4	36	
SCORE																				

**Raymond Hearn**  
Golf Course Design, Inc.  
272 Highland Court  
Royal Oak, Michigan 48067  
482-2000    www.rhdesign.com  
rhdesign.com

January 6, 2012

# 18 HOLE "JUNIOR" COURSE

  
**ISLAND Hills**  
 GOLF CLUB  
 CENTREVILLE, MICHIGAN



## SCORECARD

HOLE #	GREEN	J-PAR	HOLE #	GREEN	J-PAR
1	133	4	10	167	4
2	179	4	11	151	4
3	92	3	12	80	3
4	268	5	13	188	4
5	76	3	14	264	5
6	276	5	15	141	4
7	174	4	16	127	4
8	162	4	17	68	3
9	184	4	18	216	5
OUT	1544	36	IN	1402	36
			TOTAL	2946	72



**Raymond Hearn**  
 Golf Course Designs, Inc.  
 172 Highland Court  
 Oakland, MI 48866  
 482-4411  
 482-4411  
 482-4411

# SCORECARD

HOLE #	GREEN	J-PAR	HOLE #	GREEN	J-PAR
1	133	4	10	167	4
2	179	4	11	151	4
3	92	3	12	80	3
4	268	5	13	188	4
5	76	3	14	264	5
6	276	5	15	141	4
7	174	4	16	127	4
8	162	4	17	68	3
9	184	4	18	216	5
OUT	1544	36	IN	1402	36
			TOTAL	2946	72

# Scorecard for New Junior Course

HOLE #	OLD HOLE #	JUNIOR TEE	PAR
1	1	230	4
2	2	197	4
3	5	219	4
4	6	107	3
5	7	207	4
6	8	109	3
7	9	319	5
8	10	218	4
9	11	<u>289</u>	<u>5</u>
OUT		1895	36
10	12	306	5
11	13	104	3
12	14	224	4
13	15	213	4
14	New	360	5
15	New	295	4
16	16	196	4
17	17	99	3
18	18	<u>240</u>	<u>4</u>
IN		2037	36
OUT		<u>1895</u>	<u>36</u>
TOTAL		3932	72

# PRELIMINARY MASTER PLAN

## HOLE #3 - OPTION B

IF TWO NEW HOLES ARE NOT APPROVED

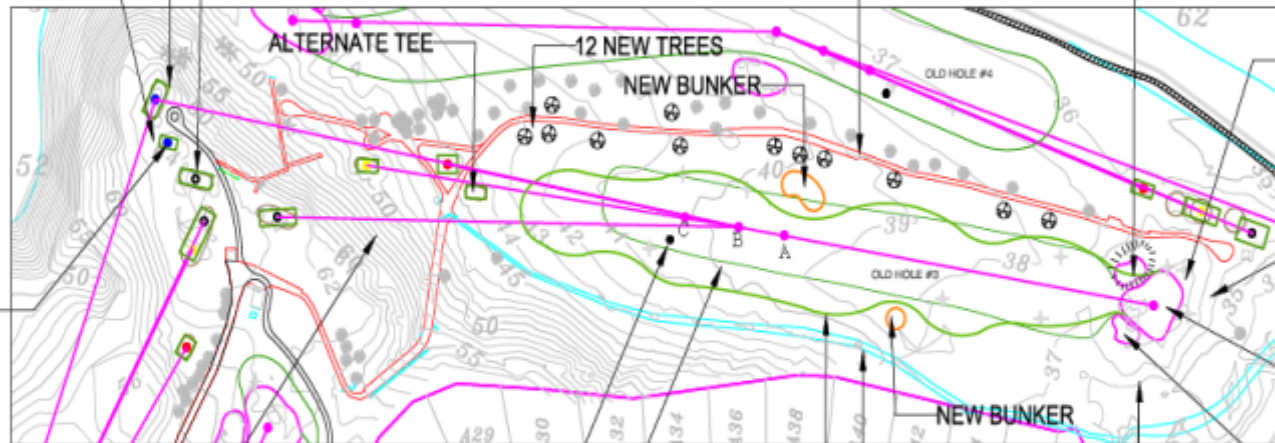
RE-GRADE ALL TEES AND TEE SURROUNDINGS, ADD SUBSURFACE DRAINAGE (SIZE & LOCATION TBD), THEN RAISE IRRIGATION HEADS AND AREAS 15CM WITH SAND CAP.

UTILIZE EXISTING BACK TEE ON HOLE #5 FOR NEW BACK TEE ON HOLE #3.

ELIMINATE BUNKER, REPLACE WITH ROLL AND APPROACH INTO THE GREEN.

ALTERNATE TEE NEW CART PATHS WITH DRAINAGE DESIGNED INTO PATHS

ADD NEW SUBSURFACE DRAINAGE AROUND THE GREEN (SIZE & LOCATION TBD).



ADD CART PATH CURBING AROUND GREEN AND TEES.

UTILIZE EXISTING BACK TEE ON HOLE #3 FOR NEW BACK TEE ON HOLE #5.

RAISE LOW SPOT ON GREEN WITH GREENS MIX.

REDUCE HEIGHT OF HILLSIDE VEGETATION TWICE PER YEAR TO 15CM.

NEW JUNIOR TEE AREA (FLAT PLATE IN FAIRWAY).

NEW BUNKER  
CLEAN OUT, DOUBLE EXISTING WIDTH AND ROCK LINE INTERCEPTOR CREEK.

DEEPEN BUNKER BY 30CM.

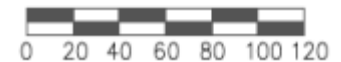
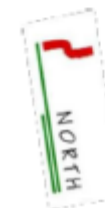
ELEVATE FAIRWAY BY AN AVERAGE OF ONE METER, RE-GRADE, ADD SUBSURFACE DRAINAGE (SIZE & LOCATION TBD), RAISE IRRIGATION HEADS, AND THEN CAP WITH 15CM OF SAND.

NEW CART PATHS WITH DRAINAGE DESIGNED INTO PATHS

SCORECARD					
	Azul	Blanco	Amarillo	Rojo	PAR
EXISTING:	468	421	376	345	4
PROPOSED:	472	421	376	345	4

● JUNIOR TEE PLATE = 224 YARDS PAR 4

SHOT MATRIX				
	Azul	Blanco	Amarillo	Rojo
A:	300	249	204	173
B:	275	224	179	148
C:	250	199	154	123



1:2,000, 1MM = 2M

13/12/2012

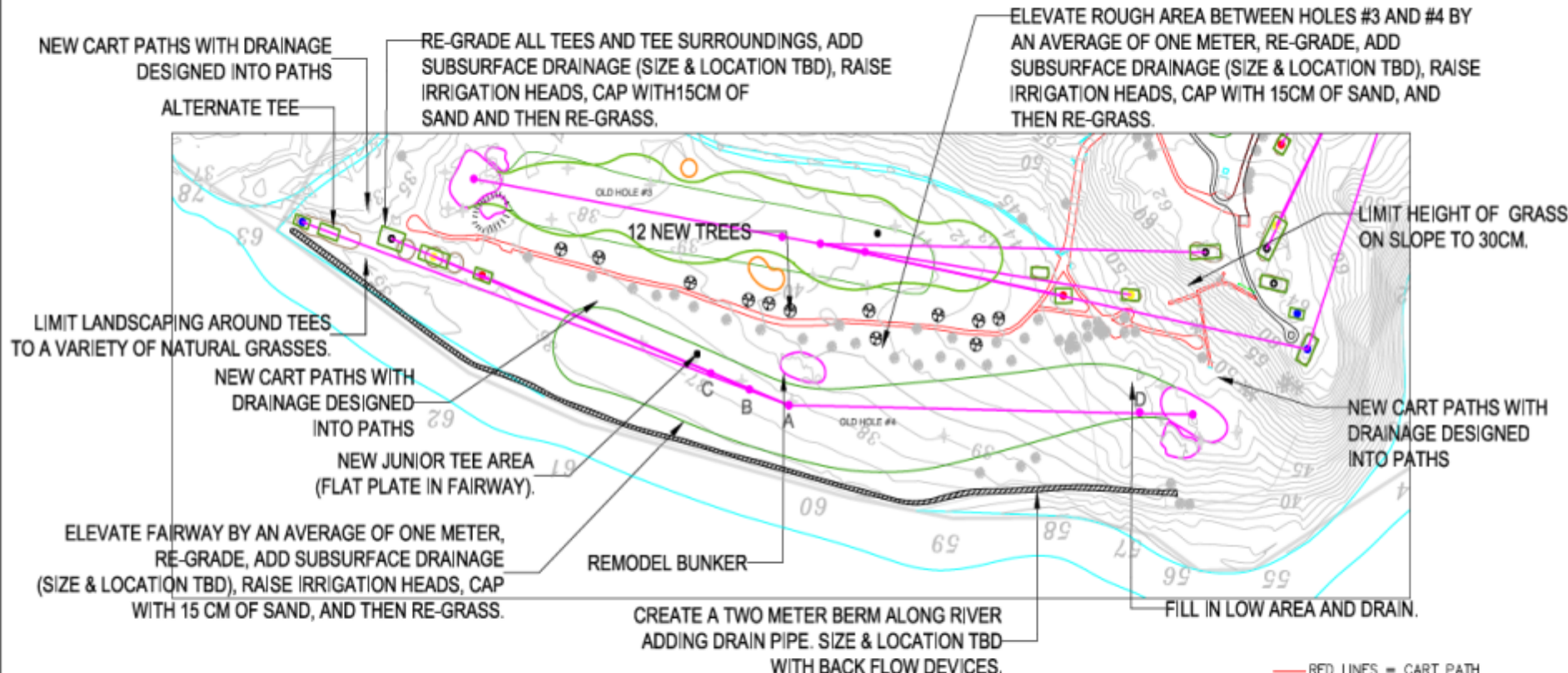
G-OB3



# PRELIMINARY MASTER PLAN

## HOLE #4 - OPTION B

### IF TWO NEW HOLES ARE NOT APPROVED



SCORECARD					
	Azul	Blanco	Amarillo	Rojo	PAR
EXISTING:	520	470	443	417	5
PROPOSED:	520	470	443	417	5

● JUNIOR TEE PLATE = 284 YARDS PAR 5

SHOT MATRIX					
	Azul	Blanco	Amarillo	Rojo	D
A:	300	250	223	197	195
B:	275	225	198	172	220
C:	250	200	173	147	245

— RED LINES = CART PATH TO BE REMOVED.

\*MAINTAIN 15CM OF APPROVED SAND IN ALL BUNKERS.

\*ALL LAKE, BANK STABILIZATION, OVERFLOWS, MAINLINE DRAINAGE AND BRIDGE DESIGN BY EPYPSA

\* TBD = TO BE DETERMINED

0 20 40 60 80 100 120

1:2,000, 1MM = 2M

13/12/2012

# Preliminary Master Plan Reports

- Preliminary Irrigation Analysis Report
- Preliminary Golf Course Construction Bid
- Preliminary Golf Course Report

Gracias Para Su Tiempo



Raymond Hearn  
Golf Course Designs, Inc.